



Resource booklet

Contents

Colour plates	3
Plate 1: Raphael, <i>Madonna of the Meadows</i>	3
Plate 2: Damian Hirst, <i>Mother and Child (Divided)</i>	4
Plate 3: Tracey Emin, <i>My Bed</i>	5
Plate 4: Chris Ofili, <i>No Woman No Cry</i>	6
Plate 5a: Grayson Perry, <i>Barbaric Splendour</i>	7
Plate 5b: Grayson Perry, <i>Barbaric Splendour</i> (detail)	8
Plate 6: Grayson Perry, <i>Golden Ghosts</i>	9
Plate 7: Chris Ofili, <i>Afrodizzia</i>	10
Plate 8: Tracy Emin, <i>In my family when someone dies they are cremated and their ashes are thrown across the sea</i>	11
Plate 9: Tracey Emin, <i>The Perfect Place to Grow</i>	12
Turner Prize shortlists 1984 to 2012	13
Acknowledgements	14

Colour plates

Plate 1: Raphael, *Madonna of the Meadows*



Raphael, *Madonna of the Meadows*, 1505 or 1506, oil on wood panel, 113 × 89 cm. Kunsthistorisches Museum, Wien oder KHM, Wien.

Plate 2: Damian Hirst, *Mother and Child (Divided)*



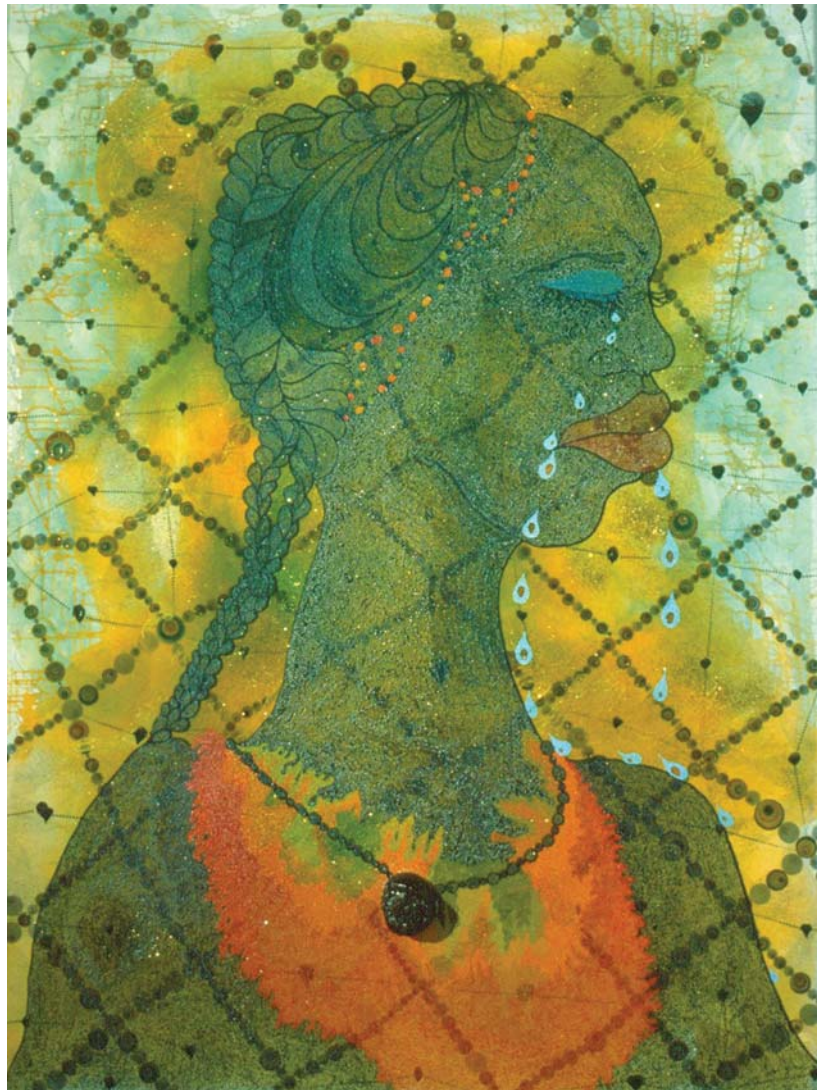
Damian Hirst, *Mother and Child (Divided)*, 1993. Glass, painted steel, silicone, acrylic, monofilament, stainless steel, cow, calf and formaldehyde solution. Two parts, each (cow): 74.8 x 127 x 42.9 in (1900 x 3225 x 1090 mm); two parts, each (calf): 40.5 x 66.5 x 24.6 in (1029 x 1689 x 625 mm). Photographed by Prudence Cuming Associates.

Plate 3: Tracey Emin, *My Bed*



Tracey Emin, *My Bed*, 1998, mattress, bed, linen, pillows, suitcase, ephemera, 79 × 211 × 234 cm.
Courtesy White Cube, London.

Plate 4: Chris Ofili, *No Woman No Cry*



Chris Ofili, *No Woman No Cry*, 1998, acrylic paint, oil paint, polyester resin, pencil, paper collage, map pins, elephant dung on canvas, 8 × 6 feet/243.8 × 182.8 cm (CO 43 A). Collection: Tate Gallery, London.

Plate 5a: Grayson Perry, *Barbaric Splendour*



Grayson Perry, *Barbaric Splendour*, 2003, glazed ceramic, 67 x 35 cm.

Plate 5b: Grayson Perry, *Barbaric Splendour*
(detail)



Grayson Perry, *Barbaric Splendour* (detail), 2003, glazed ceramic, 67 x 35 cm.

Plate 6: Grayson Perry, *Golden Ghosts*



Grayson Perry, *Golden Ghosts*, 2001, glazed ceramic, 65 x 39 cm (GP 59)

Plate 7: Chris Ofili, *Afrodizzia*



Chris Ofili, *Afrodizzia*, 2nd version, 1996, acrylic, oil, polyester resin, paper collage, glitter, map pins and elephant dung on linen, 8 × 6 feet/243.8 × 182.8 cm (CO 25). © Chris Ofili. Courtesy of Chris Ofili and Victoria Miro Gallery London.

Plate 8: Tracy Emin, *In my family when someone dies they are cremated and their ashes are thrown across the sea*



Tracy Emin, *In my family when someone dies they are cremated and their ashes are thrown across the sea*, 1997, plaster, white paint, eleven seagulls, 450 × 555 × 413 cm (variable) installation. Courtesy White Cube, London. Photo: Stephen White.

Plate 9: Tracey Emin, *The Perfect Place to Grow*



Tracey Emin, *The Perfect Place to Grow*, 2001, wooden birdhouse with metal roof, wooden steps, wooden trestle, plastic watering can, plants and film, Super8, 59 x 295 x 200 cm.

Turner Prize shortlists 1984 to 2012

Artists in **bold** are featured in the module. [W] = winner

1984 Richard Deacon Gilbert & George Richard Long Malcolm Morley [W]	1985 Terry Atkinson Tony Cragg Ian Hamilton-Finlay Milena Kalinovska Howard Hodgkin [W] John Walker	1986 Art & Language Victor Burgin Gilbert & George [W] Derek Jarman Stephen McKenna Bill Woodrow
1987 Patrick Caulfield Helen Chadwick Richard Deacon [W] Richard Long Declan McGonagle Thérèse Oulton	1988 Tony Cragg [W] Lucian Freud Richard Hamilton Richard Long David Mach Boyd Webb Alison Wilding Richard Wilson	1989 Gillian Ayres Lucian Freud Richard Long [W] Giuseppe Penone Paula Rego Sean Scully Richard Wilson
1990 NO PRIZE	1991 Ian Davenport Anish Kapoor [W] Fiona Rae Rachel Whiteread	1992 Grenville Davey [W] Damien Hirst David Tremlett Alison Wilding
1993 Hannah Collins Vong Phaophanit Sean Scully Rachel Whiteread [W]	1994 Willie Doherty Peter Doig Antony Gormley [W] Shirazeh Houshiary	1995 Mona Hatoum Damien Hirst [W] Callum Innes Mark Wallinger
1996 Douglas Gordon [W] Craigie Horsfield Gary Hume Simon Patterson	1997 Christine Borland Angela Bulloch Cornelia Parker Gillian Wearing [W]	1998 Tacita Dean Cathy de Monchaux Chris Ofili [W] Sam Taylor-Wood
1999 Tracey Emin Steve McQueen [W] Steven Pippin Jane and Louise Wilson	2000 Glenn Brown Michael Raedecker Tomoko Takahashi Wolfgang Tillmans [W]	2001 Richard Billingham Martin Creed [W] Isaac Julien Mike Nelson
2002 Fiona Banner Liam Gillick Keith Tyson [W] Catherine Yass	2003 Jake and Dinos Chapman Willie Doherty Anya Gallaccio Grayson Perry [W]	2004 Kutlug Ataman Jeremy Deller [W] Langlands and Bell Yinka Shonibare
2005 Darren Almond Gillian Carnegie Jim Lambie Simon Starling [W]	2006 Tomma Abts [W] Phil Collins Mark Titchner Rebecca Warren	2007 Zarina Bhimji Nathan Coley Mike Nelson Mark Wallinger [W]
2008 Runa Islam Mark Leckey [W] Goshka Macuga Cathy Wilkes	2009 Enrico David Roger Hiorns Lucy Skaer Richard Wright [W]	2010 Dexter Dalwood Angela de la Cruz Susan Philipsz [W] The Otolith Group

2011

George Shaw
Karla Black
Martin Boyce [W]
Hilary Lloyd

2012

Lali 'Spartacus' Chetwynd
Luke Fowler
Paul Noble
Elizabeth Price [W]

Acknowledgements

This Resource booklet forms part of the badged open course *Taking your first steps in higher education* – www.open.edu/openlearn/ocw/education/taking-your-first-steps-higher-education/content-section-overview

Grateful acknowledgement is made to the following sources:

Images

Plate 1: © Kunsthistorisches Museum, Wien oder KHM, Wien;

Plate 2: © Damien Hirst and Science Ltd. All rights reserved, DACS 2013;

Plate 3: © Tracey Emin. All rights reserved, DACS 2013;

Plate 4: Courtesy Chris Ofili and Victoria Miro, London. Copyright © Chris Ofili. Photography © Tate Photography;

Plate 5a and 5b: © Grayson Perry. Image courtesy of the Saatchi Gallery, London;

Plate 6: © Grayson Perry. Courtesy of Grayson Perry, the Saatchi Gallery, London and Victoria Miro, London;

Plate 7: © Chris Ofili. Courtesy of Chris Ofili and Victoria Miro Gallery London;

Plate 8: © Tracey Emin. All rights reserved, DACS 2013;

Plate 9: © Tracey Emin. Photo © Tate, London 2013;