

## Installing Signal Wizard for use in offline mode

The Signal Wizard software shown in the video can be installed on PCs with Windows 7 and above.

1 To install the software, go to <http://www.signalwizardsystems.com/>. You will see the homepage shown in Figure 1.



**Figure 1 Signal Wizard home page**

2 Select the Downloads link.

There are various software packages available on the Downloads page. Scroll downwards to find the Signal Wizard 2.5 download link, as in Figure 2.

**Signal Wizard 2.5.** Fully functional user interface and filter design package for the Signal Wizard 2.5 hardware unit.

**Figure 2 Signal Wizard 2.5 download link**

Note that there is a later version of Signal Wizard available, Signal Wizard 3. However, version 3 does not support the offline filter design feature shown in the video, so you must use version 2.5. (If you wish to use version 3, you must purchase the Signal Wizard hardware.)

3 Click on the Signal Wizard 2.5 download link and run the SW25 Setup.msi file.

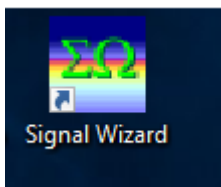
The Signal Wizard 2.5 Setup Wizard will appear, as shown in Figure 3.



**Figure 3 The Signal Wizard 2.5 Setup Wizard**

4 Select Next and you will be guided through the installation process.

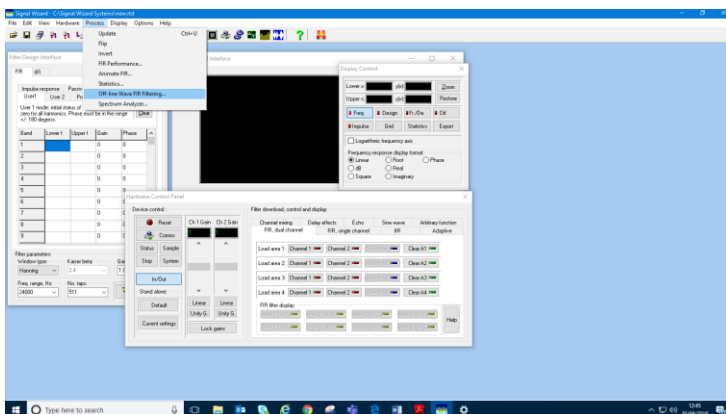
Once the installation process is complete, you will have the Signal Wizard icon shown in Figure 4 on your desktop.



**Figure 4 Signal Wizard icon**

5 Double-click on the Signal Wizard icon to run the software.

You will see the interface shown in Figure 5.



**Figure 5 Signal Wizard interface**

6 Select the Process menu and then the Offline Wave FIR Filtering option to design filters without the Signal Wizard hardware.