

Idealized sculpture of Llywelyn ap Gruffudd in Cardiff City Hall

(Source: Cardiff City Council.)
From: Edward I and Wales

Scripta Walhe
 Adhuc scripta Walhe sub tali signo.

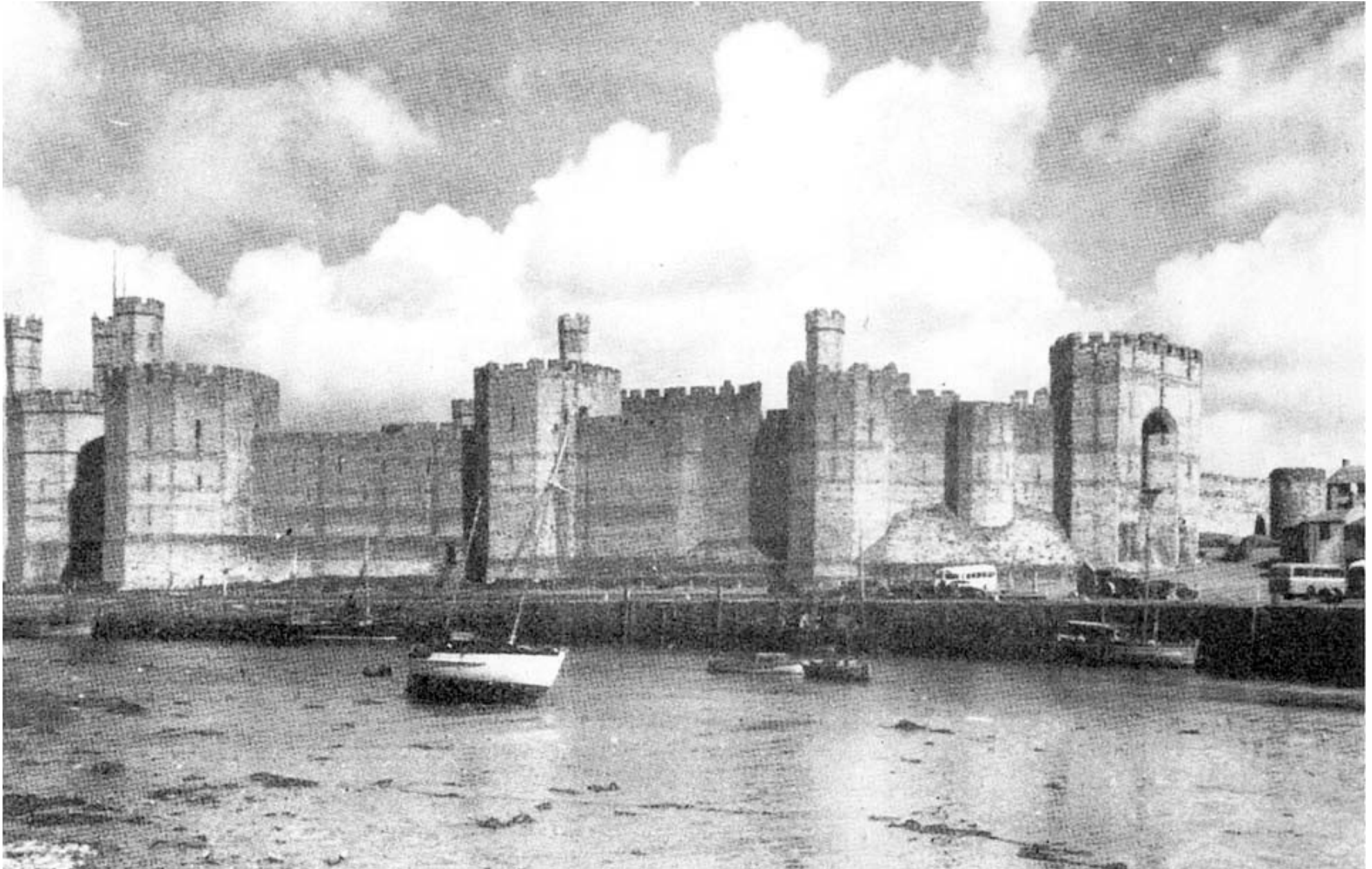
¶ In p qm reforma
 an pax m. ed.
 Rex a resur si
 in edua apd

Homo regis edwardi quondam omnia in quidam parte apud Lymordyn p dnm p
 am de caduicis capitaneis quontoms dnm Regis de fidelitatem assensu et consensu dno
 Westballia hntoy plenariam potestate p hntas dnm Regis parentes recipere Galles ad pacem

fo 220y

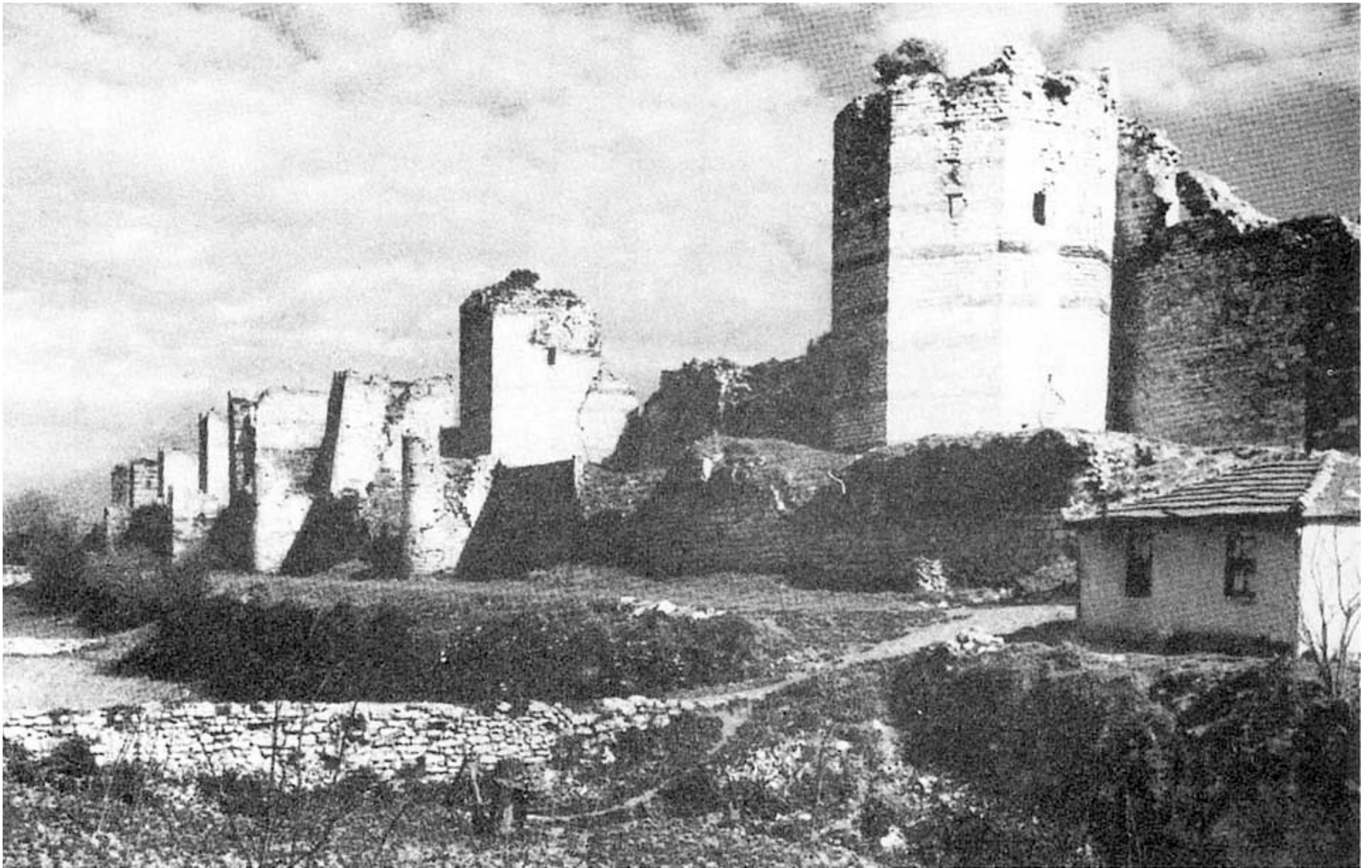
Uniuscuiusque vna nos p nob et hntibz nro bona et mepa voluntate nra concessisse et obligatu et reso
 ab exorduch qd si nos cont pacem pda resy maliquo tpe deuenem decto qd totu suu nrm pa
 amonu et feduante dno reso et hntibz suis et pcurator dno et voluit hnt absq calupnia p nos ut per





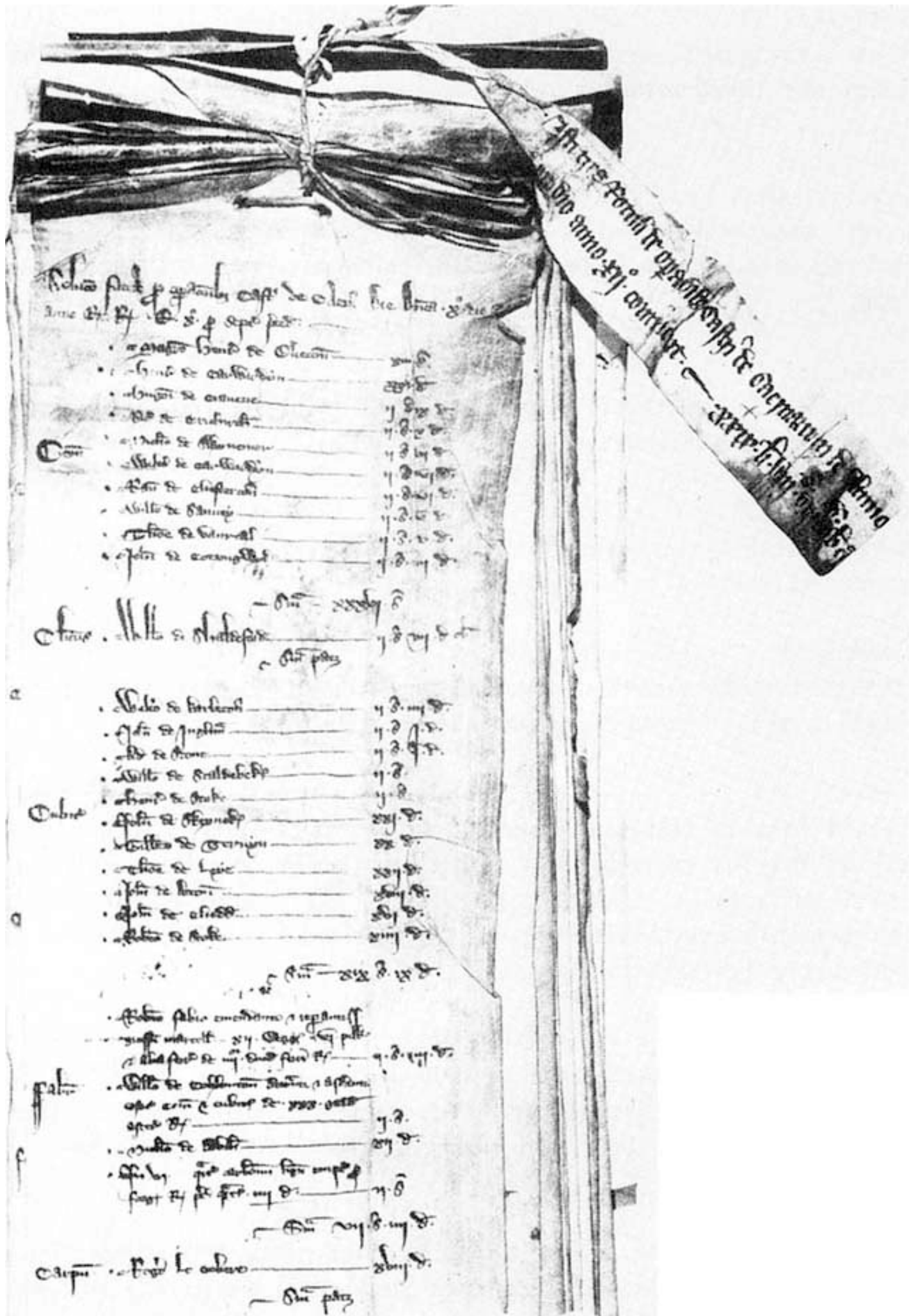
Caernarfon Castle

(Source: Cadw: Welsh Historic Monuments. Crown Copyright.)
From: Edward I and Wales



The Theodosian Wall of Constantinople

(Source Cadw: Welsh Historic Monuments. Crown Copyright.)
From: Edward I and Wales



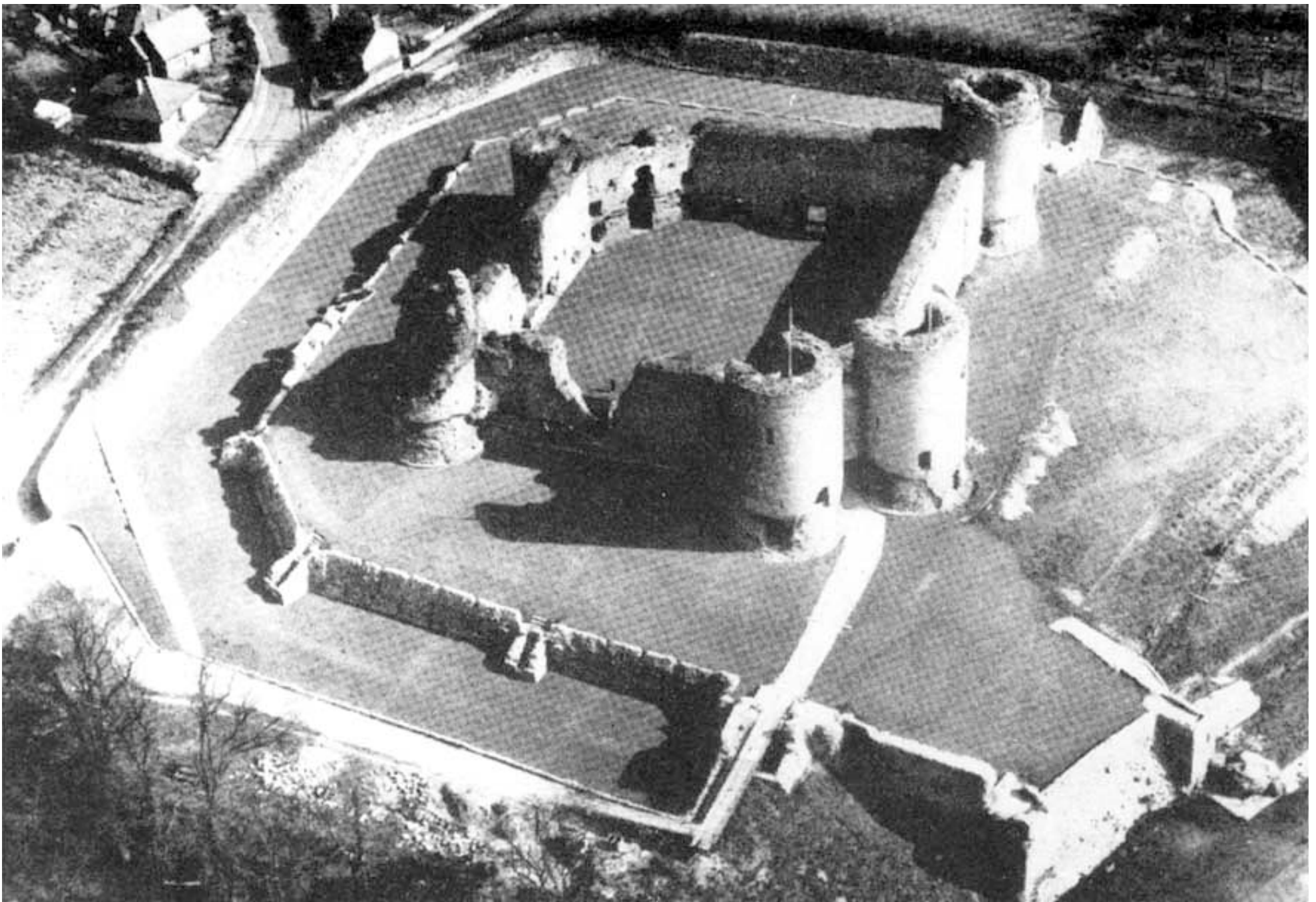
Payments to building workers at Caernarfon Castle, 1316–17

(Source: Public Record Office.)
From: Edward I and Wales



Thirteenth-century sculpture believed to be the head of the youthful Edward I

(Source: Dean and Chapter of Westminster.)
From: Edward I and Wales



Rhuddlan Castle

(Source: Cadw: Welsh Historic Monuments. Crown Copyright.)
From: Edward I and Wales



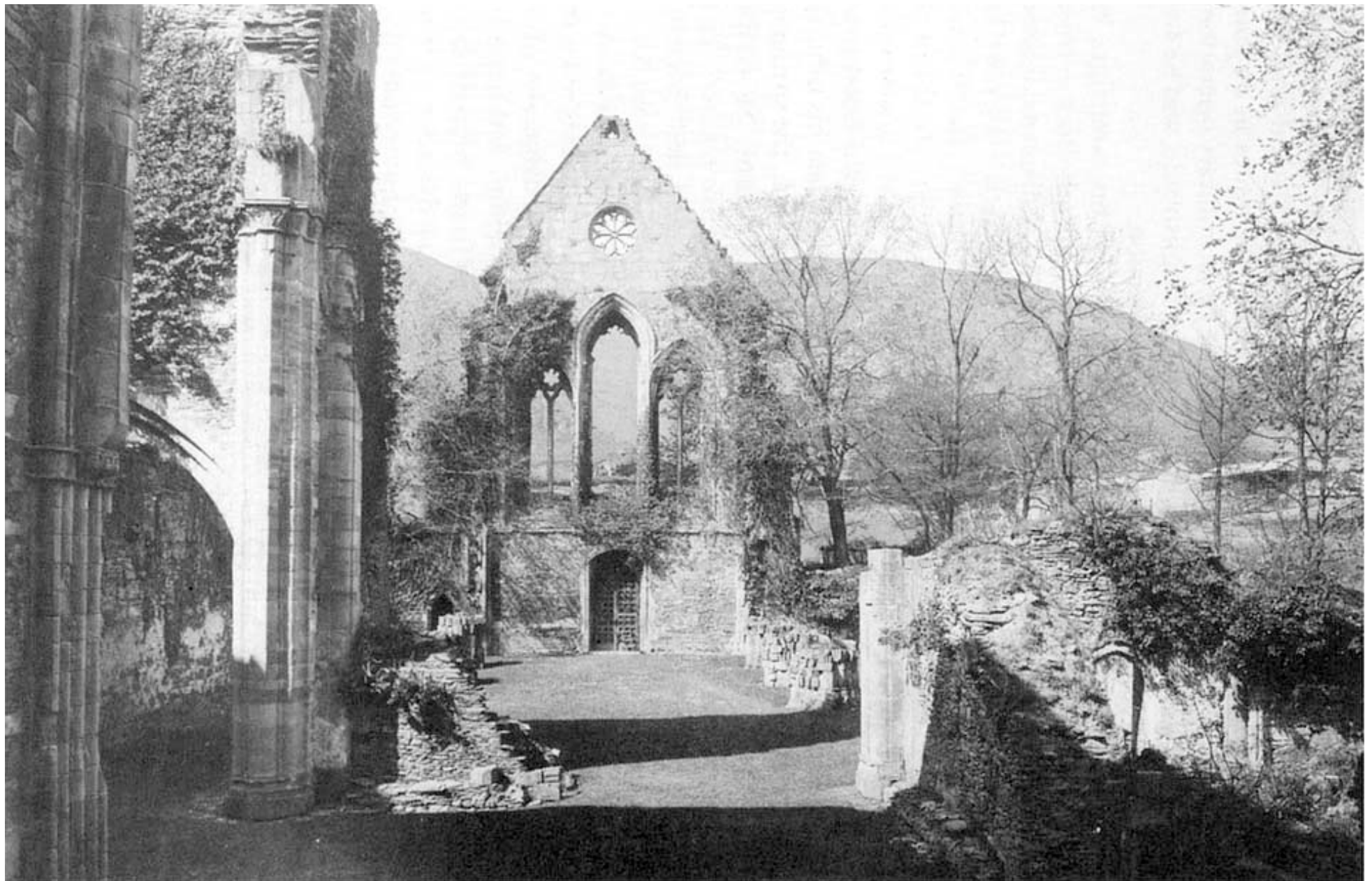
An early twentieth-century representation of Gerald of Wales

(Source: Cardiff City Council.)
From: Edward I and Wales



Bangor Cathedral

(Source: National Monuments Record for Wales.)
From: Edward I and Wales



Valle Crucis

(Source: National Monuments Record for Wales.)
From: Edward I and Wales

Dyw sul y bloddu yw
 tel rws llwelyn ap grufud
 ac edward brenhin
 llongyr. ar hanhauaf gwr
 dy bemue y doeth y ben
 hyn ay lu hyt en tudla
 ac er anwones llynged
 hyt en mon a howel ap
 grufud ap ednewed en
 dywilauc
 en cy blaen ac wynt a
 goresgynaffant von.
 ac a vanaffant goresgyn
 arvon ac ena y gwyned
 pwyd y bont ar venci
 ac y wnes y bont o tni
 llweth ac y lodes ancith
 o laefflon ac creill alas
 ac ena y gwyned pwyd
 brat llwelyn ene doeth
 en mangor y gan y wyr
 of ebon. ac ena er edwyl
 llwelyn ap grufud daud y
 viand en gwarthadwy
 gwyned. ac ena of a
 bach ac lu y goresgyn
 pwyd abuelte ac of ag
 resgynand hyt en llann
 gienton ac o dena of a
 anwones y wyr ay disten
 gwyned y wrognath

gwyr briedemau ac a
 dau y tywilauc abychi
 die o wyr gyd ac of. ac e
 na y doeth moffler morth
 myr a grufud ap gwen
 nwynnyn allu er bichyn
 gantwyt en duebud
 am cy penn ac ena y llas
 llwelyn ay orewgwr.
 dyw damalus lap pethw
 nos o vn dyd hyn dyw
 Rodolc a dyw gwener
 oed y dyd hynnw. Blw
 ydyn nelfaf y honno y
 dechewt mstell Aber Conw
 ar bew manis. a chuer
 cuarvon. a hardlech. ar
 pymed dyd diwethaf o
 vis ebnill y ganet Edward
 aierenarvon. ar haf hyn
 uw y goresgynand y b
 hyn holl wyned. ac y dach
 daud ap grufud ar hew.
 ac y hymmyrth y bichyn
 gwynlon o wyned. ar am
 hawaf gwedy bemue y delid
 daud ap grufud ac oweyn
 y vab ac y ducpwyd wynt
 hyt en budelan ygharthur
 ac odena y ducpwyd wynt
 hyt en amwylth ac ene

pan lws
 y pwyd

pan lws
 y pwyd
 yz amwyl
 yz lws

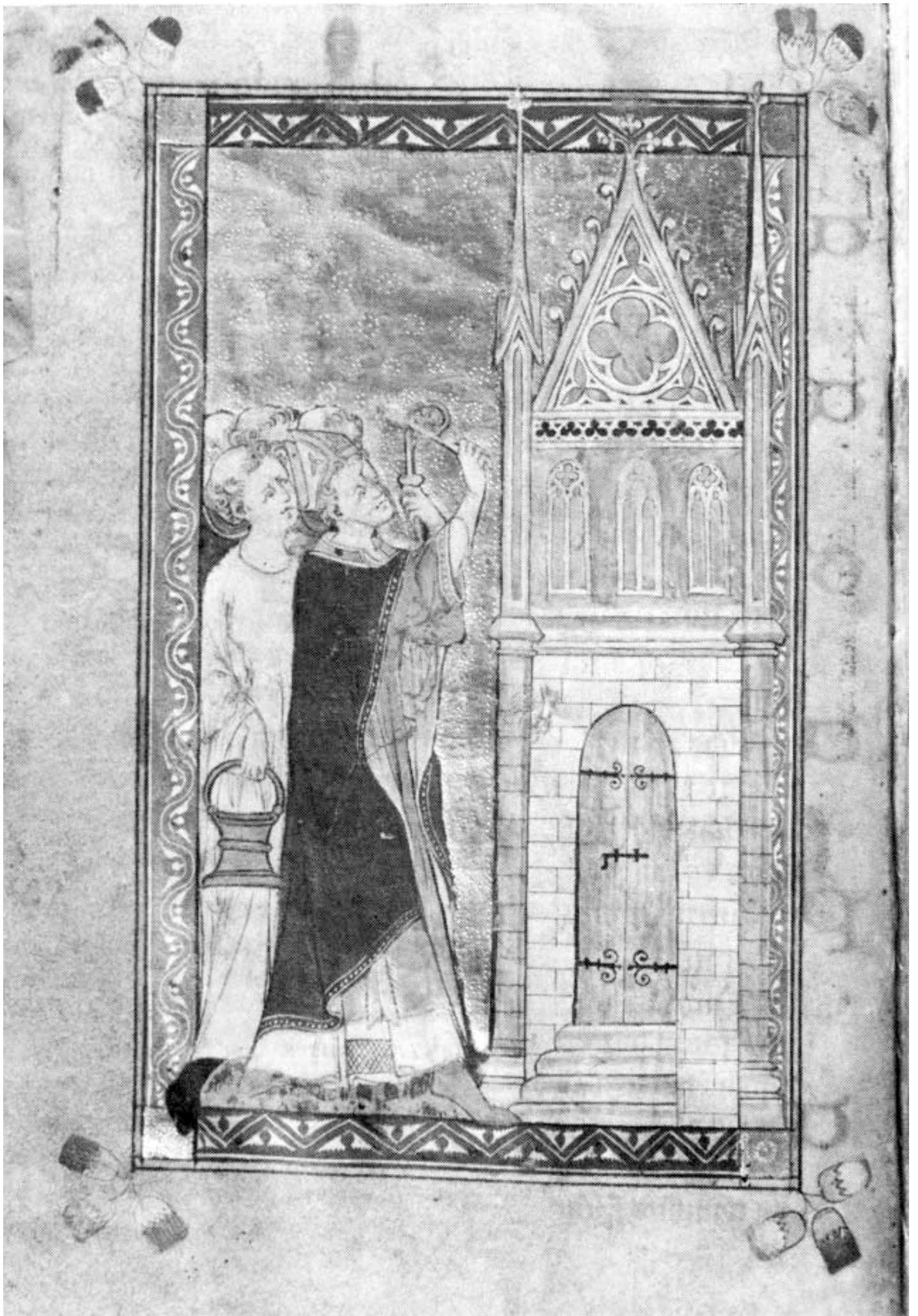
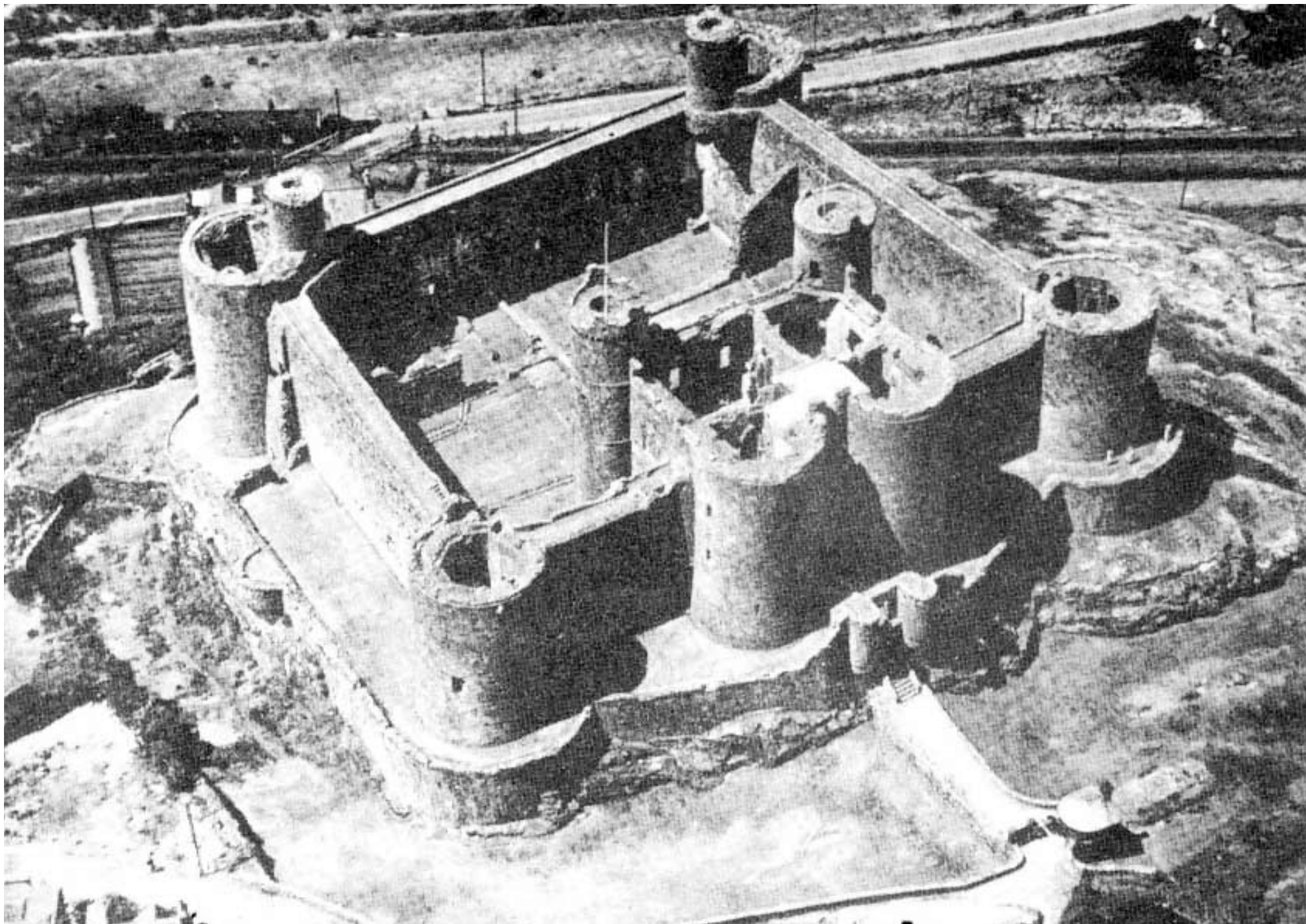


Illustration from the Anian Pontifical, Bangor

(Source: Dean and Chapter of Bangor Cathedral.)
From: Edward I and Wales



Harlech Castle

(Source: Welsh Historic Monuments Crown Copyright.)
From: Edward I and Wales