

# Resource booklet

## Contents

---

<b>Colour plates</b>	<b>3</b>
Plate 1: Raphael, <i>Madonna of the Meadows</i>	3
Plate 2: Damian Hirst, <i>Mother and Child (Divided)</i>	4
Plate 3: Tracey Emin, <i>My Bed</i>	5
Plate 4: Chris Ofili, <i>No Woman No Cry</i>	6
Plate 5a: Grayson Perry, <i>Barbaric Splendour</i>	7
Plate 5b: Grayson Perry, <i>Barbaric Splendour</i> (detail)	8
Plate 6: Grayson Perry, <i>Golden Ghosts</i>	9
Plate 7: Chris Ofili, <i>Afrodizzia</i>	10
Plate 8: Tracy Emin, <i>In my family when someone dies they are cremated and their ashes are thrown across the sea</i>	11
Plate 9: Tracey Emin, <i>The Perfect Place to Grow</i>	12
<b>Turner Prize shortlists 1984 to 2012</b>	<b>13</b>
<b>Acknowledgements</b>	<b>14</b>



## Colour plates

### Plate 1: Raphael, *Madonna of the Meadows*



Raphael, *Madonna of the Meadows*, 1505 or 1506, oil on wood panel, 113 × 89 cm. Kunsthistorisches Museum, Wien oder KHM, Wien.

## Plate 2: Damian Hirst, *Mother and Child (Divided)*



Damian Hirst, *Mother and Child (Divided)*, 1993. Glass, painted steel, silicone, acrylic, monofilament, stainless steel, cow, calf and formaldehyde solution. Two parts, each (cow): 74.8 x 127 x 42.9 in (1900 x 3225 x 1090 mm); two parts, each (calf): 40.5 x 66.5 x 24.6 in (1029 x 1689 x 625 mm). Photographed by Prudence Cuming Associates.

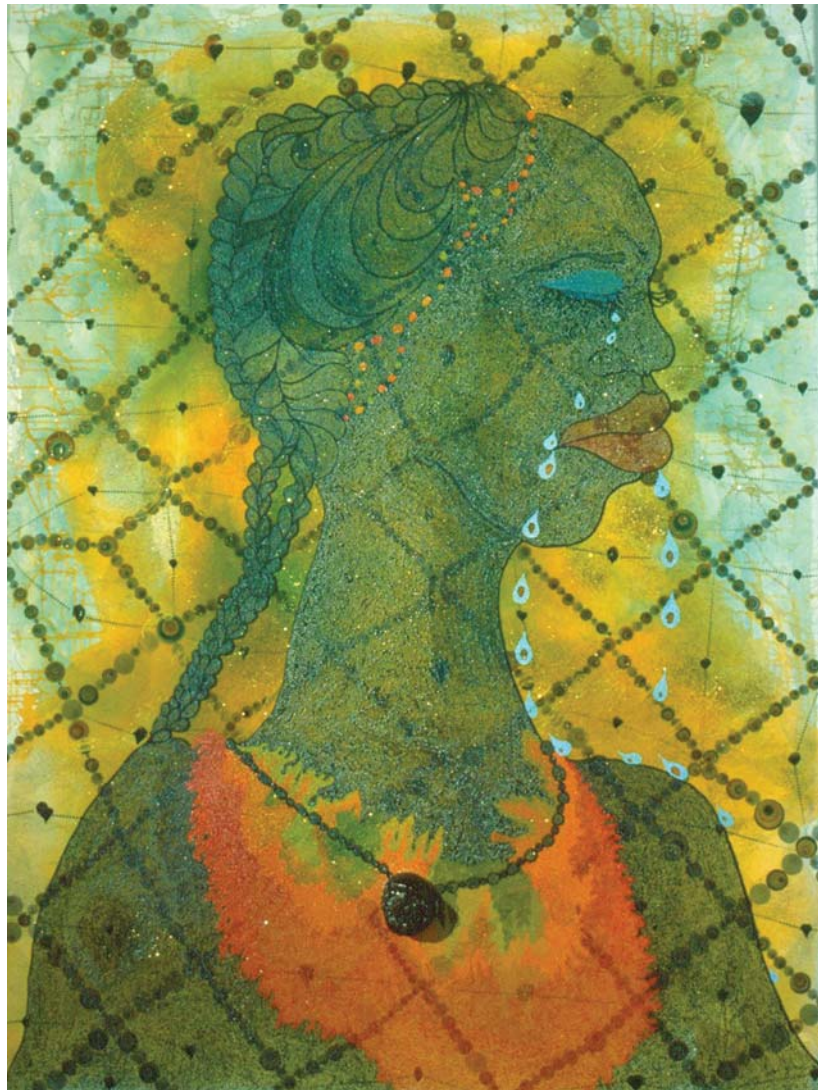
Plate 3: Tracey Emin, *My Bed*



Tracey Emin, *My Bed*, 1998, mattress, bed, linen, pillows, suitcase, ephemera, 79 × 211 × 234 cm.  
Courtesy White Cube, London.



Plate 4: Chris Ofili, *No Woman No Cry*



Chris Ofili, *No Woman No Cry*, 1998, acrylic paint, oil paint, polyester resin, pencil, paper collage, map pins, elephant dung on canvas, 8 × 6 feet/243.8 × 182.8 cm (CO 43 A). Collection: Tate Gallery, London.

Plate 5a: Grayson Perry, *Barbaric Splendour*



Grayson Perry, *Barbaric Splendour*, 2003, glazed ceramic, 67 x 35 cm.

Plate 5b: Grayson Perry, *Barbaric Splendour* (detail)



Grayson Perry, *Barbaric Splendour* (detail), 2003, glazed ceramic, 67 x 35 cm.



Plate 6: Grayson Perry, *Golden Ghosts*



Grayson Perry, *Golden Ghosts*, 2001, glazed ceramic, 65 x 39 cm (GP 59)

## Plate 7: Chris Ofili, *Afrodizzia*



Chris Ofili, *Afrodizzia*, 2nd version, 1996, acrylic, oil, polyester resin, paper collage, glitter, map pins and elephant dung on linen, 8 × 6 feet/243.8 × 182.8 cm (CO 25). © Chris Ofili. Courtesy of Chris Ofili and Victoria Miro Gallery London.



Plate 8: Tracy Emin, *In my family when someone dies they are cremated and their ashes are thrown across the sea*



Tracy Emin, *In my family when someone dies they are cremated and their ashes are thrown across the sea*, 1997, plaster, white paint, eleven seagulls, 450 × 555 × 413 cm (variable) installation. Courtesy White Cube, London. Photo: Stephen White.

Plate 9: Tracey Emin, *The Perfect Place to Grow*



Tracey Emin, *The Perfect Place to Grow*, 2001, wooden birdhouse with metal roof, wooden steps, wooden trestle, plastic watering can, plants and film, Super8, 59 x 295 x 200 cm.

## Turner Prize shortlists 1984 to 2012

Artists in <b>bold</b> are featured in the module. [W] = winner		
<b>1984</b> Richard Deacon <b>Gilbert &amp; George</b> Richard Long Malcolm Morley [W]	<b>1985</b> Terry Atkinson Tony Cragg Ian Hamilton-Finlay Milena Kalinovska Howard Hodgkin [W] John Walker	<b>1986</b> Art & Language Victor Burgin <b>Gilbert &amp; George [W]</b> Derek Jarman Stephen McKenna Bill Woodrow
<b>1987</b> Patrick Caulfield Helen Chadwick Richard Deacon [W] Richard Long Declan McGonagle Thérèse Oulton	<b>1988</b> Tony Cragg [W] Lucian Freud Richard Hamilton Richard Long David Mach Boyd Webb Alison Wilding Richard Wilson	<b>1989</b> Gillian Ayres Lucian Freud Richard Long [W] Giuseppe Penone <b>Paula Rego</b> Sean Scully Richard Wilson
<b>1990</b> NO PRIZE	<b>1991</b> Ian Davenport Anish Kapoor [W] <b>Fiona Rae</b> <b>Rachel Whiteread</b>	<b>1992</b> Grenville Davey [W] <b>Damien Hirst</b> David Tremlett Alison Wilding
<b>1993</b> Hannah Collins Vong Phaophanit Sean Scully <b>Rachel Whiteread [W]</b>	<b>1994</b> Willie Doherty Peter Doig Antony Gormley [W] Shirazeh Houshiary	<b>1995</b> Mona Hatoum <b>Damien Hirst [W]</b> Callum Innes <b>Mark Wallinger</b>
<b>1996</b> Douglas Gordon [W] Craigie Horsfield Gary Hume Simon Patterson	<b>1997</b> Christine Borland Angela Bulloch Cornelia Parker Gillian Wearing [W]	<b>1998</b> Tacita Dean Cathy de Monchaux <b>Chris Ofili [W]</b> Sam Taylor-Wood
<b>1999</b> <b>Tracey Emin</b> Steve McQueen [W] Steven Pippin Jane and Louise Wilson	<b>2000</b> Glenn Brown Michael Raedecker Tomoko Takahashi Wolfgang Tillmans [W]	<b>2001</b> Richard Billingham Martin Creed [W] Isaac Julien Mike Nelson
<b>2002</b> Fiona Banner Liam Gillick Keith Tyson [W] Catherine Yass	<b>2003</b> Jake and Dinos Chapman Willie Doherty Anya Gallaccio <b>Grayson Perry [W]</b>	<b>2004</b> Kutlug Ataman Jeremy Deller [W] Langlands and Bell Yinka Shonibare
<b>2005</b> Darren Almond Gillian Carnegie Jim Lambie Simon Starling [W]	<b>2006</b> Tomma Abts [W] Phil Collins Mark Titchner Rebecca Warren	<b>2007</b> Zarina Bhimji Nathan Coley Mike Nelson <b>Mark Wallinger [W]</b>
<b>2008</b> Runa Islam Mark Leckey [W] Goshka Macuga Cathy Wilkes	<b>2009</b> Enrico David Roger Hiorns Lucy Skaer <b>Richard Wright [W]</b>	<b>2010</b> Dexter Dalwood Angela de la Cruz Susan Philipsz [W] The Otolith Group



---

**2011**

George Shaw  
Karla Black  
Martin Boyce [W]  
Hilary Lloyd

**2012**

Lali 'Spartacus' Chetwynd  
Luke Fowler  
Paul Noble  
Elizabeth Price [W]

---

## Acknowledgements

This Resource booklet forms part of the badged open course *Taking your first steps in higher education* – [www.open.edu/openlearn/ocw/education/taking-your-first-steps-higher-education/content-section-overview](http://www.open.edu/openlearn/ocw/education/taking-your-first-steps-higher-education/content-section-overview)

Grateful acknowledgement is made to the following sources:

## Images

Plate 1: © Kunsthistorisches Museum, Wien oder KHM, Wien;

Plate 2: © Damien Hirst and Science Ltd. All rights reserved, DACS 2013;

Plate 3: © Tracey Emin. All rights reserved, DACS 2013;

Plate 4: Courtesy Chris Ofili and Victoria Miro, London. Copyright © Chris Ofili. Photography © Tate Photography;

Plate 5a and 5b: © Grayson Perry. Image courtesy of the Saatchi Gallery, London;

Plate 6: © Grayson Perry. Courtesy of Grayson Perry, the Saatchi Gallery, London and Victoria Miro, London;

Plate 7: © Chris Ofili. Courtesy of Chris Ofili and Victoria Miro Gallery London;

Plate 8: © Tracey Emin. All rights reserved, DACS 2013;

Plate 9: © Tracey Emin. Photo © Tate, London 2013;