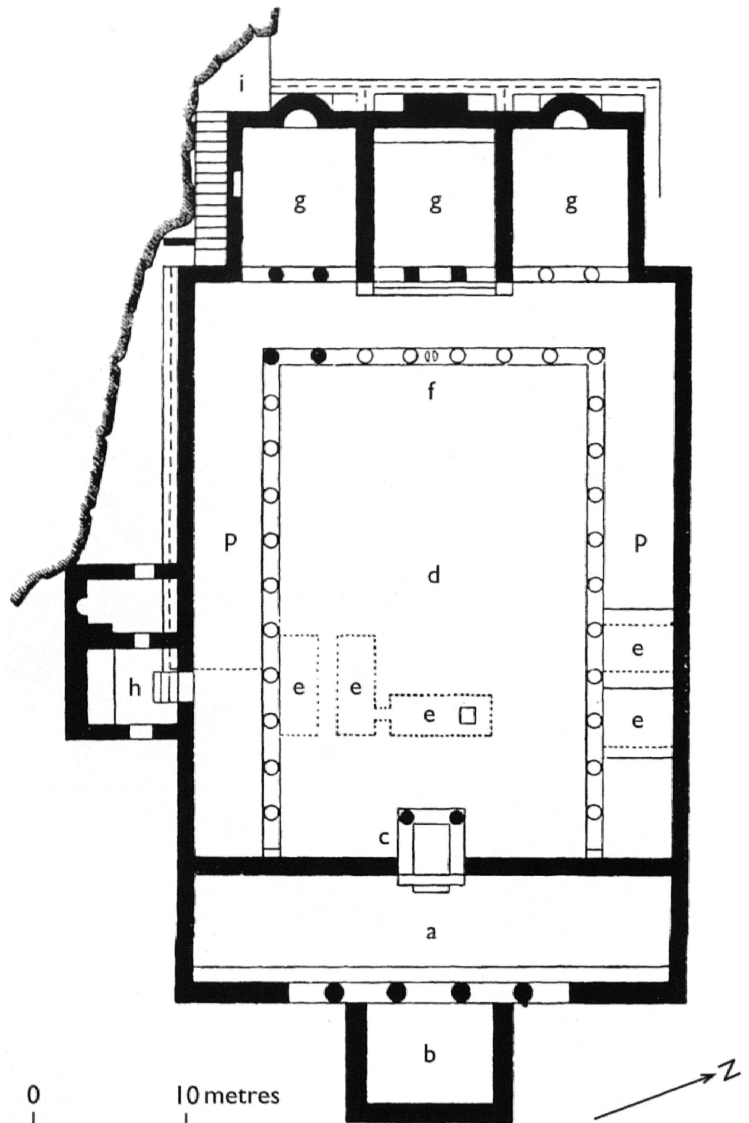


ILLUSTRATIONS BOOK

Plate 5.2 Plan of the temple of Saturn,
 Thugga. (Adapted from Poinssot, C. (1983)
 Les Ruines de Dougga, Tunis, Ministère des
 Affaires Culturelles, Institut National
 d'Archeologie et d'Arts)



KEY

- | | |
|---|------------------------------|
| a | Porch |
| b | Platform |
| c | Entrance |
| d | Courtyard |
| e | Cisterns |
| f | Footprints in stone |
| g | Cult rooms (<i>cellae</i>) |
| h | Annex and side entrance |
| i | Remains of terrace and stair |
| p | Porticoes |