



Geospatial Clean Cooking access modelling using OnStove

Hands-on 3: Working with vector data

Learning outcomes

By the end of this exercise you will be able to:

- 1) Import vector data to QGIS
- 2) Perform different key processes (such as projecting, clip) with vector data

This exercise includes screenshots to guide you through the exercise. Note that the screenshots may differ slightly from what you see when working with QGIS depending on the version that you have downloaded, which should not be a problem.

Data Acquisition

Download the folder named "Benin_vector", available [here](#), and save it on the desktop. Unzip and open this folder, in it there is a number additional folders and files. For this exercise make sure that the following files/folders are included:

- An image named "Benin_transmission_lines".
- A folder named "Transmission_Lines". Within this folder there should be files named "transmission_lines".
- A folder named "Administrative_Boundaries". Within this folder there should be files named "Administrative_Boundaries".



- A folder named “Administrative_Boundaries_Points” containing the administrative boundaries of Benin in point format named “Administrative_Boundaries_Points”.

Note! It is good practice to use underscore (_) when naming folders or datasets in GIS (instead of space) in order to avoid unexpected errors while processing.

Note2: The folder you have just downloaded is also used for the OnSSET course given through the OpenLearn page. You will notice that there are some datasets in that folder that will not be used in this exercise.

Working with vector data

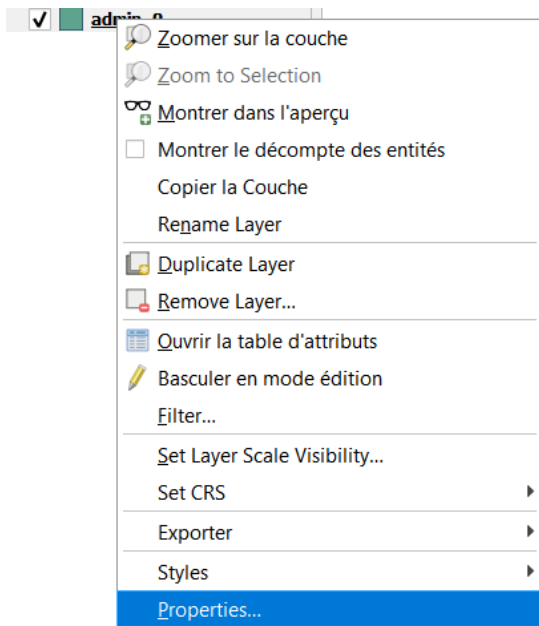
NOTE: An extensive tutorial of QGIS is available [here](#).

Import

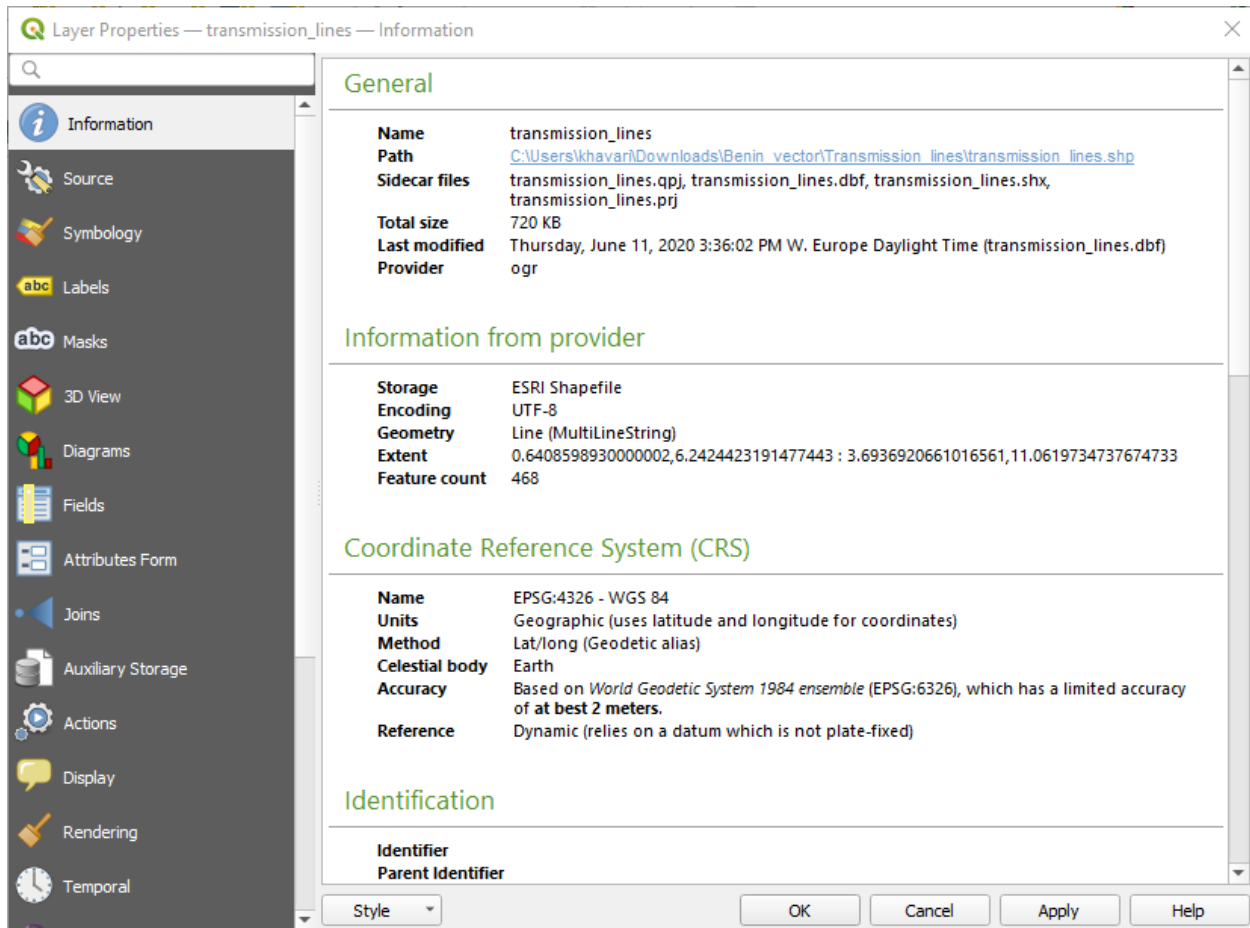
1. Importing vectors can be done in two different ways; either simply drag the vector file onto your map canvas or go to the top roll-down menu and click on **Layer → Add Layer → Add Vector Layer...**
1. Import the “**Administrative_Boundaries.shp**” layer and the “**transmission_lines.shp**” layer that you have received (when using vector layers we search for the files with **.shp** extension).

Vector properties

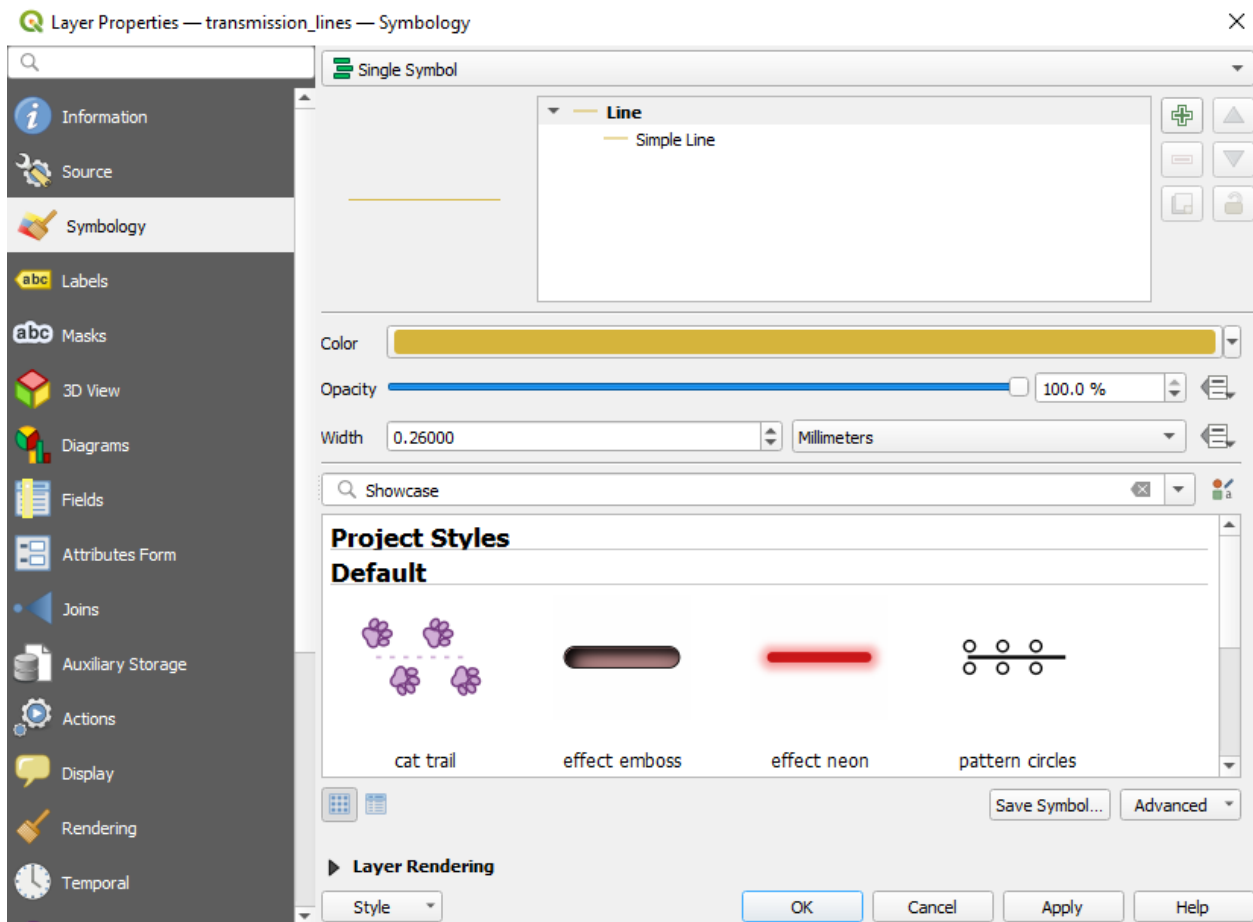
Next, we will examine the properties of different vector files. By right-clicking on one of the layers you will be able to examine and/or change properties of your vector files.



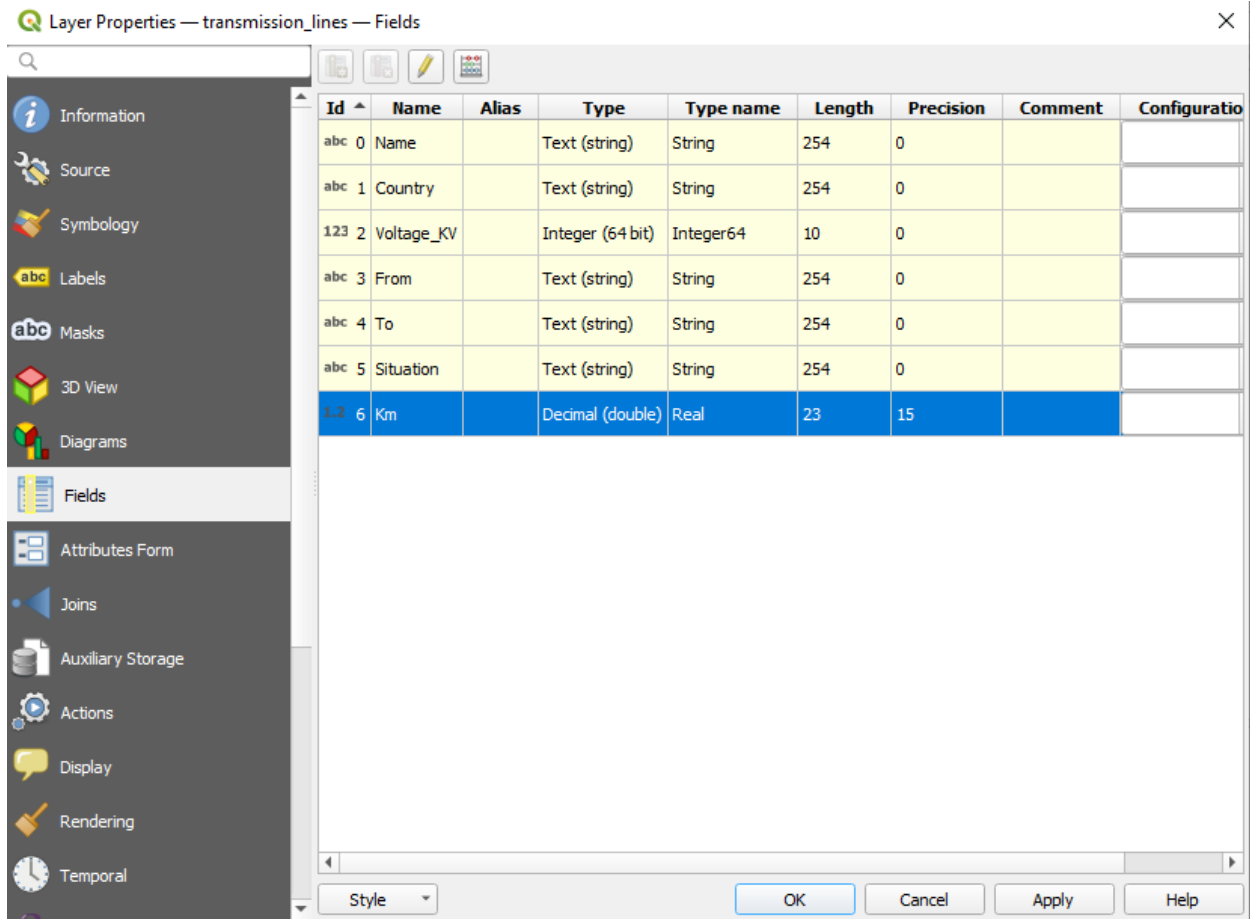
- First, click on the **Information** tab. Here you will find information about your layer.



- The most important tab for the visual appearance of your dataset is the **Symbology** tab. Here you can change many different aspects of the dataset. You can change the color, style and size of the vectors.



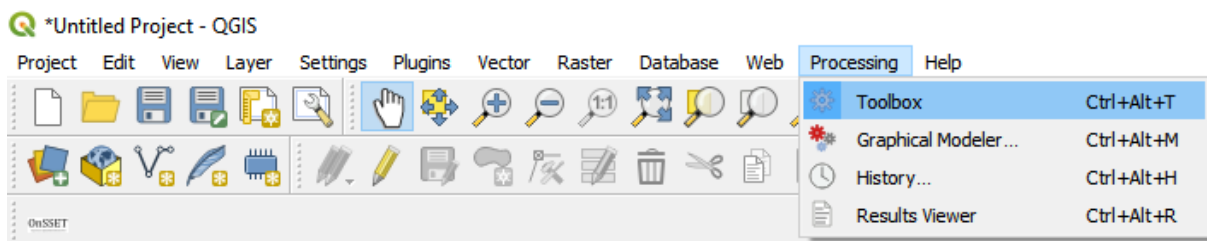
- Next, we will move on to the tab named **Fields**. Here you will be able to examine the fields in your data more in depth which can help you identify the type of data and its properties that exist in your dataset. This may be very useful when you use a dataset that is created by someone else. If you have editing toggled you will also be able to add/delete columns in this tab as well.



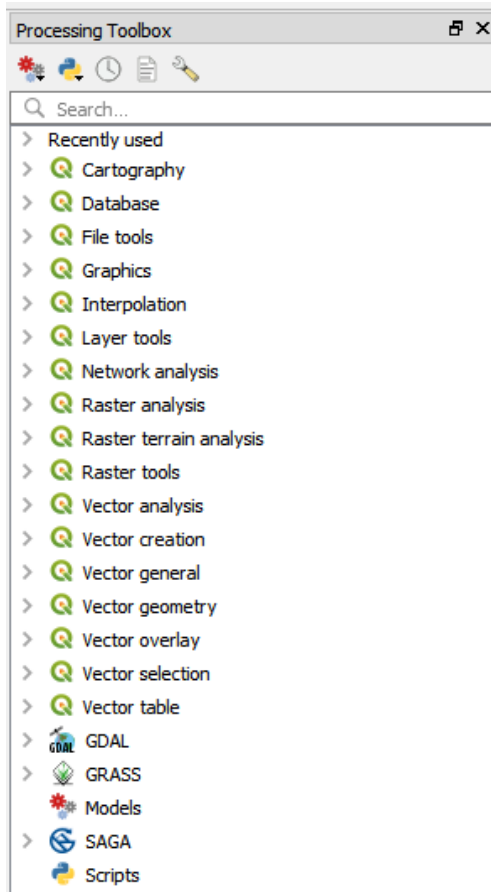
Clipping vector layers

In many cases the dataset that you are using spans across an area larger than your study area. In these areas it can be useful to delimit the dataset so that it is restricted to the area you are working with. For all type of vector files we will use the tool **Clip**. We will use this tool to make sure that the transmission lines we will work with are constrained within the borders of Benin.

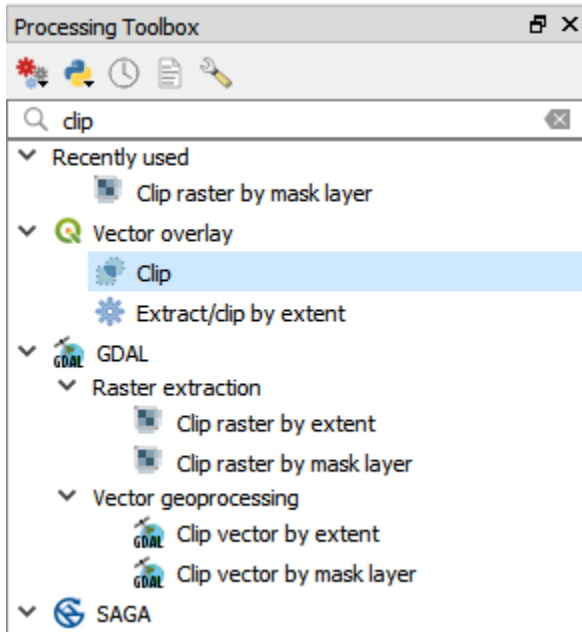
1. Make the toolbar visible by going to the menu on the top of the screen and click on **Processing → Toolbox**.



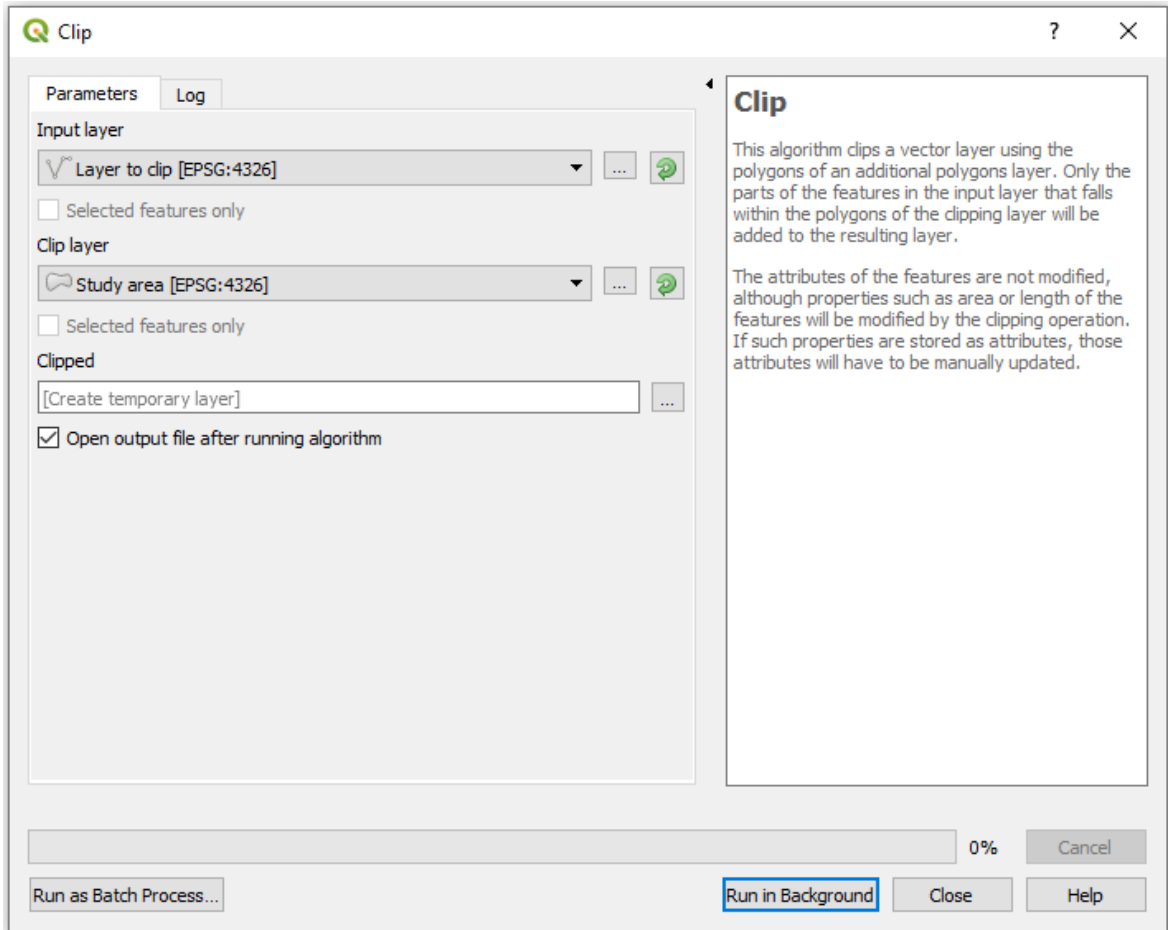
2. This will open up the toolbox on the right-hand side of the QGIS interface. In this toolbox you can search for all the tools that you need.



3. Now, search for "clip", this will show all the tools including the word clip.



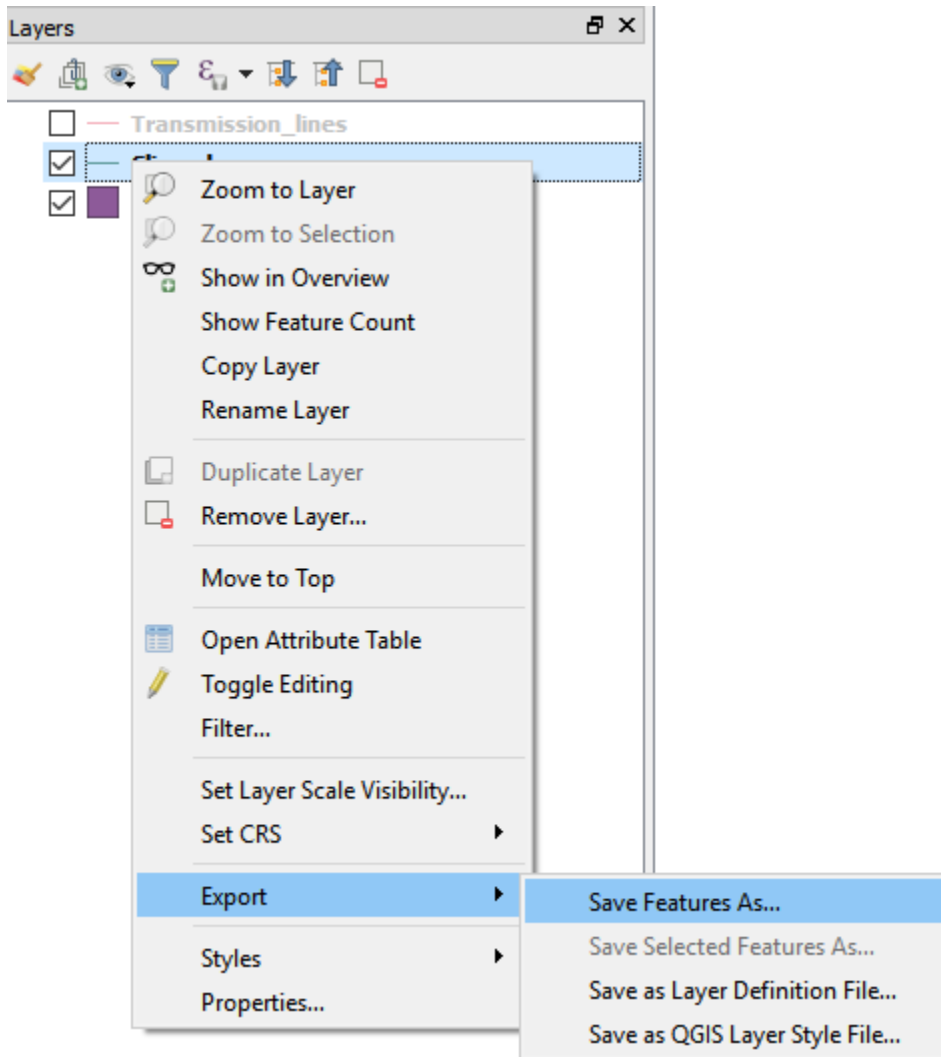
4. In this exercise we will choose the clip tool within the QGIS-package (the one highlighted in the image above).
5. In the window that opens up, choose the dataset that you wish to clip in the field that says "Input layer" and in the field that says "Clip layer" choose the dataset that you wish to clip by. As the input layer choose **transmission_lines**, and as the clip layer choose **administrative_boundaries** to clip the transmission line vector that you received by the administrative boundary polygon.



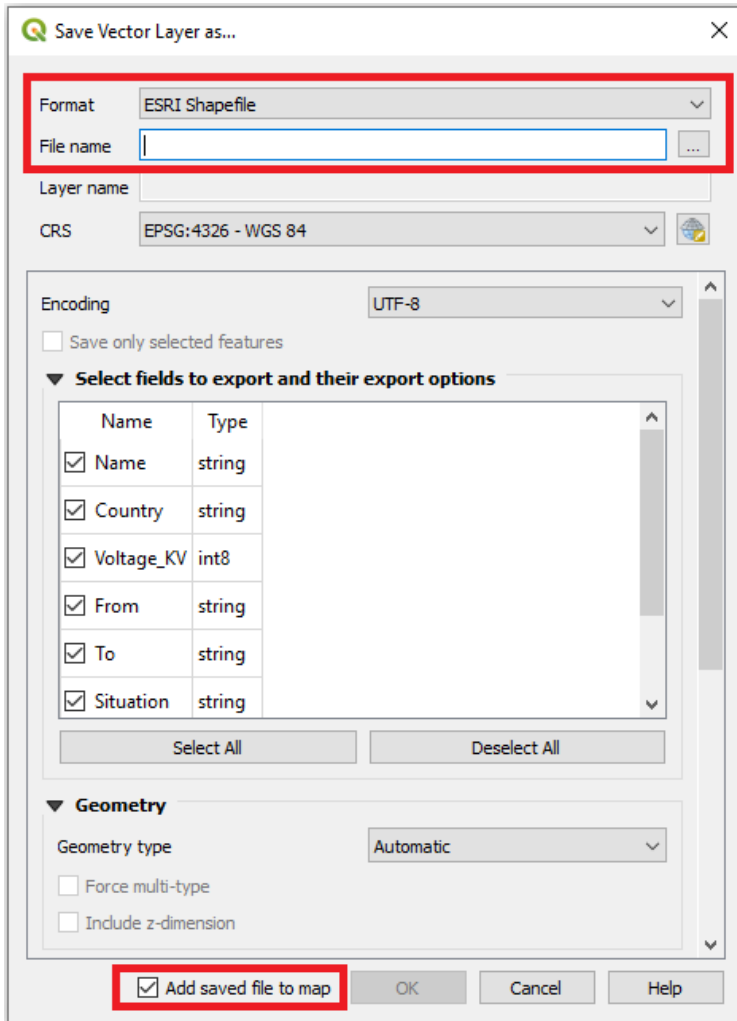
Export

Now it is time to export the clipped transmission lines to the appropriate folder. This is a very important step. When you use a tool in QGIS, e.g. “Clip”, the output file will be saved as a temporary file if you do not explicitly state that you want it saved on your computer. This means that next time you open QGIS your layers will be lost even if you save the project. To avoid this you can export your layers.

1. Right-click on the clipped layer and click on **Export → Save Features As...**



2. Choose to export your vector files as **ESRI shapefiles**. Click on three dots next to filename, and navigate to the folder you wish to save the layer in (see image below).



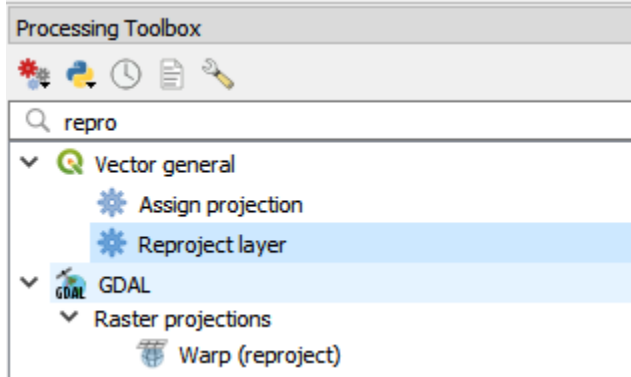
3. Name your layer "**transmission_lines_Benin**" and navigate to the folder named **Transmission_Lines** that you have received. Click "OK" (make sure that "Add saved file to map" is checked). Now you can remove the temporary file named "Clipped", by right-clicking and selecting **Remove Layer**.

Projecting vectors

The coordinate system is very important when representing data. When projecting an area onto a map there will always be a certain distortion. When choosing the coordinate system it is important to do compromises, and choose the system that gives the least distortion. For this exercise, since we are working with Benin we will have to choose a coordinate system that works well for the country. In this case, we are choosing a coordinate system named **"WGS 84/UTM zone 31N"**.

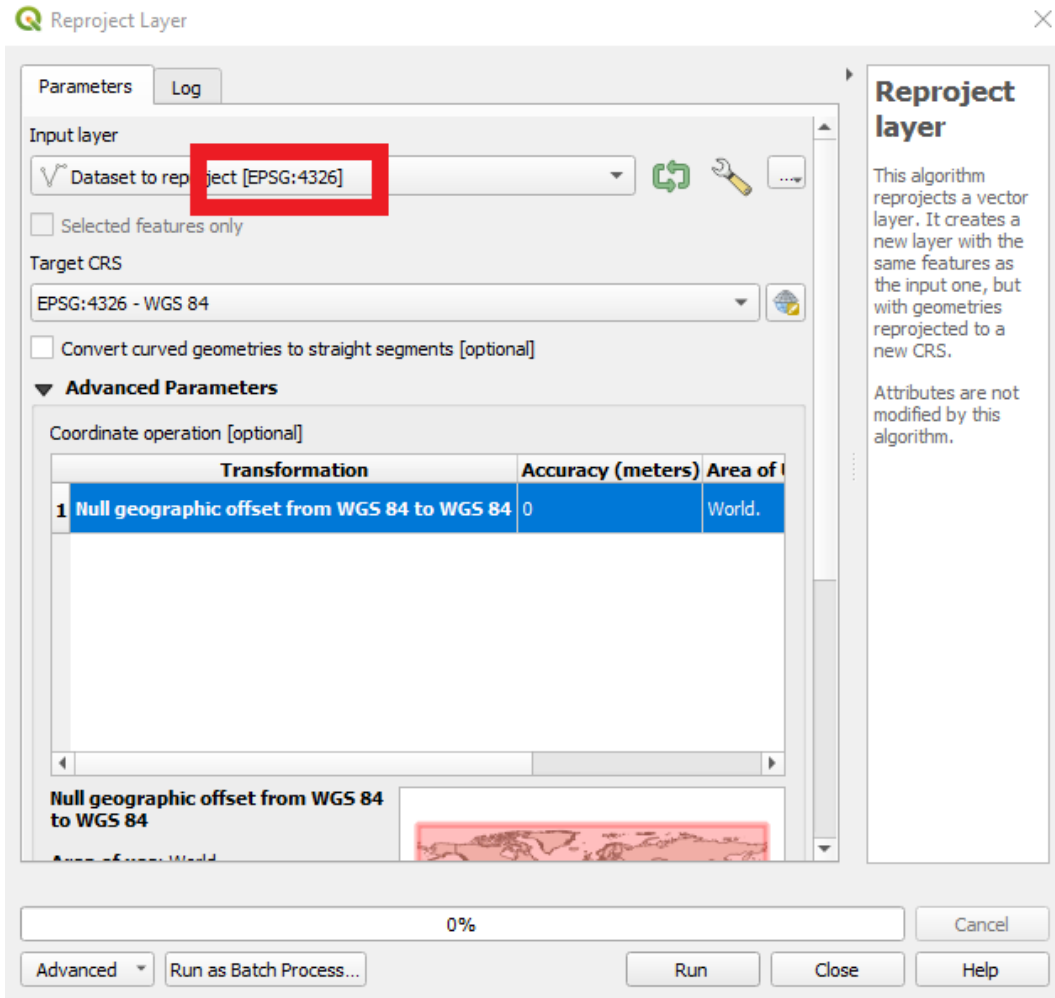
We will reproject the transmission lines that we clipped and exported.

1. In the toolbox search “Reproject layer” and double-click on it to use the tool

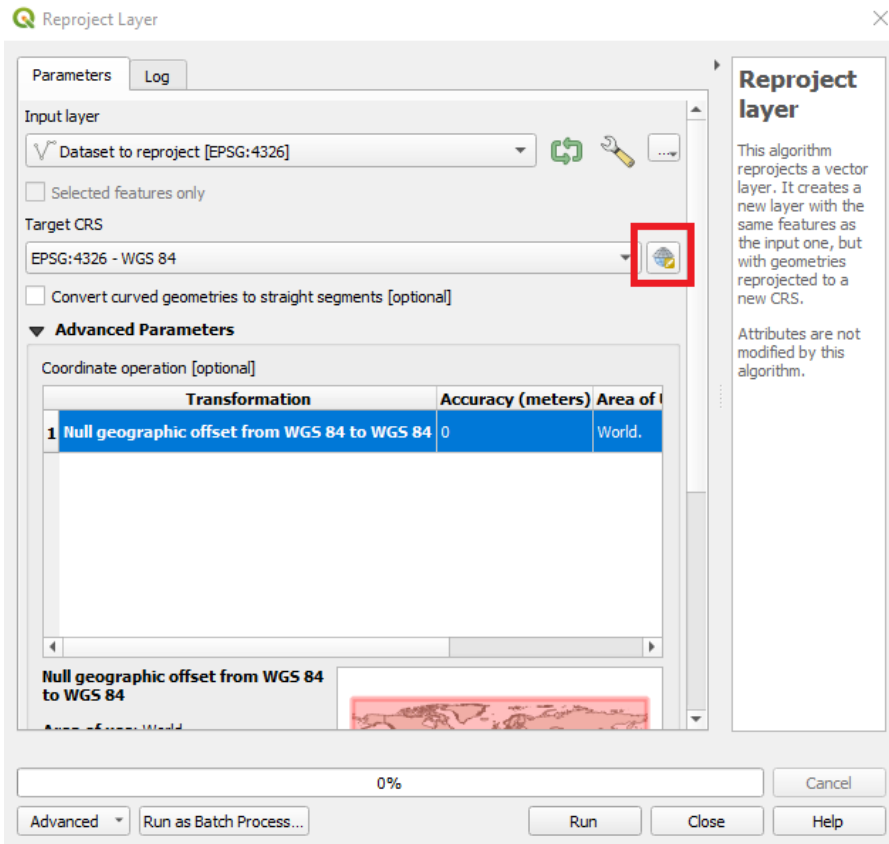


2. First, choose the dataset that you wish to project (the clipped transmission lines).

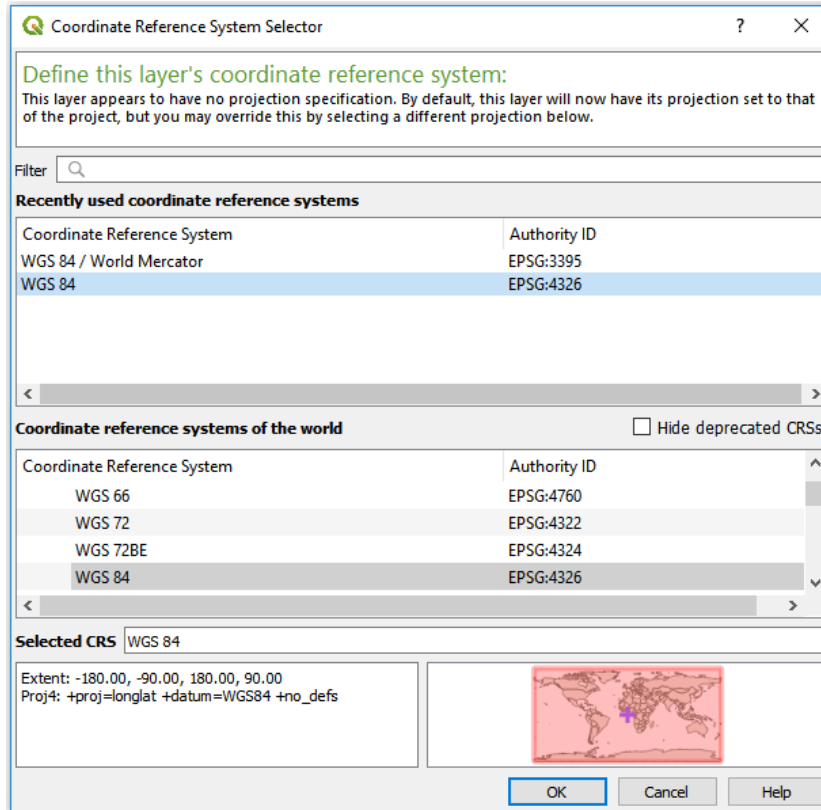
NOTE: When you choose the dataset you will be able to see the current coordinate system within brackets (see image below).



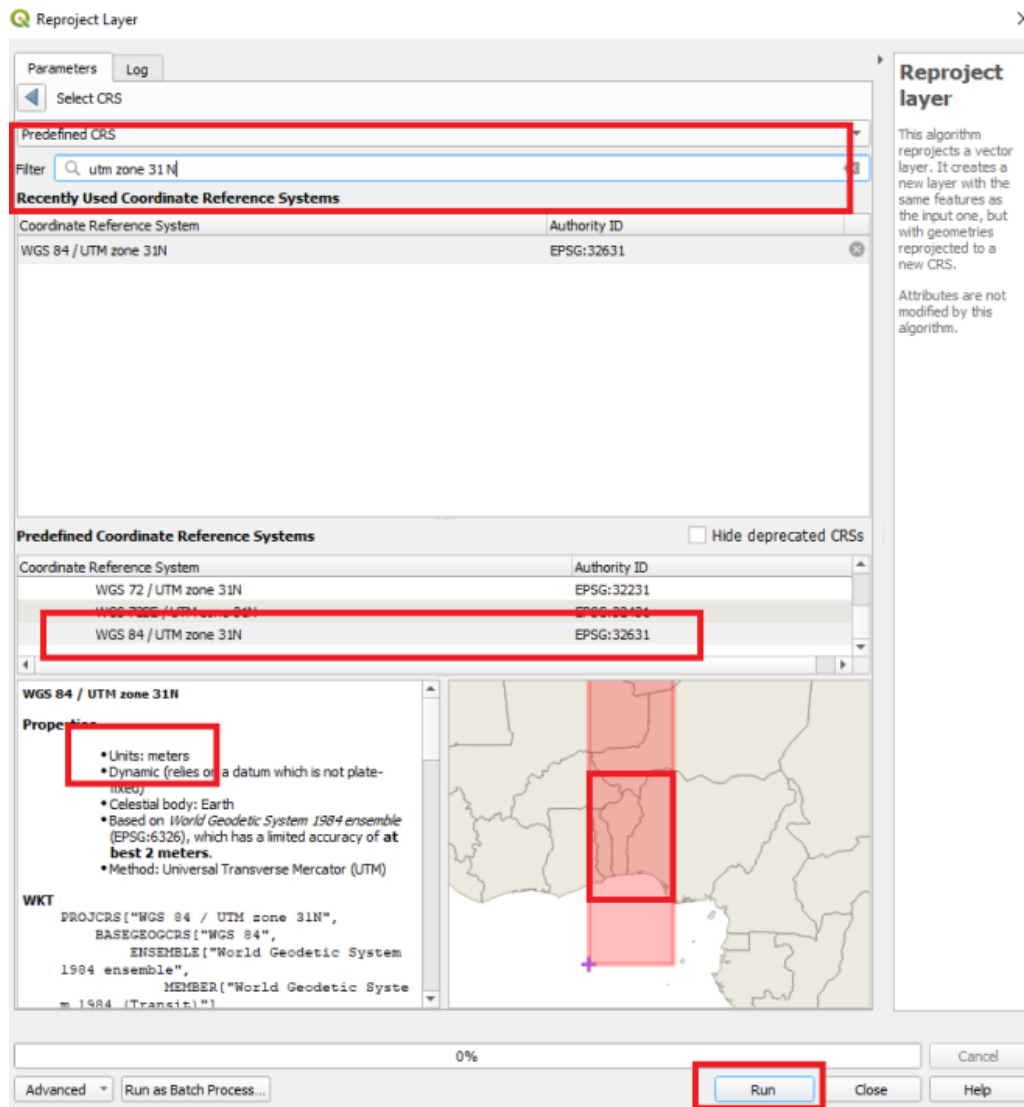
- Next, click on the icon next to the field that asks for Target CRS and choose your target coordinate system.



This will open the following window



In the filter field start typing the name of the coordinate system you want to use (**UTM zone 31N**) and double click on it as it appears.



NOTE: The unit is in meters and the red box on the map in the lower right corner covers Benin.

4. Click on **Run** to execute the tool. When finished, export as "transmission_lines_Benin_reprojected" to the "Transmission_Lines"- folder.

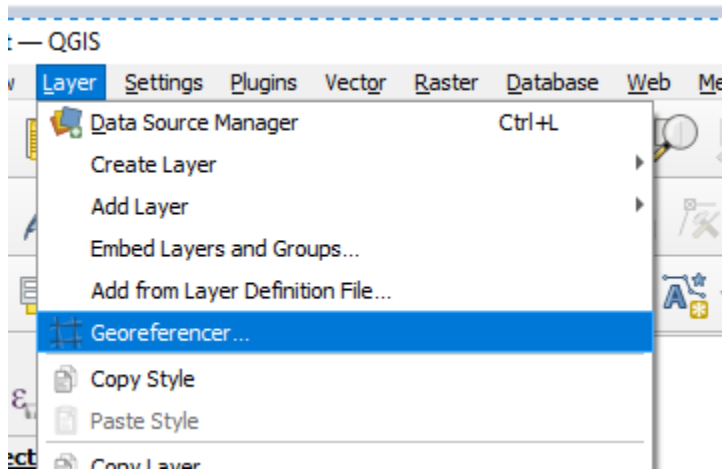
NOTE: For future studies the following site <https://epsg.io/> can be used to determine which coordinate system you should use. On this webpage you simply search for the name of your study area and take the coordinate system best suited for your study.

Georeferencing

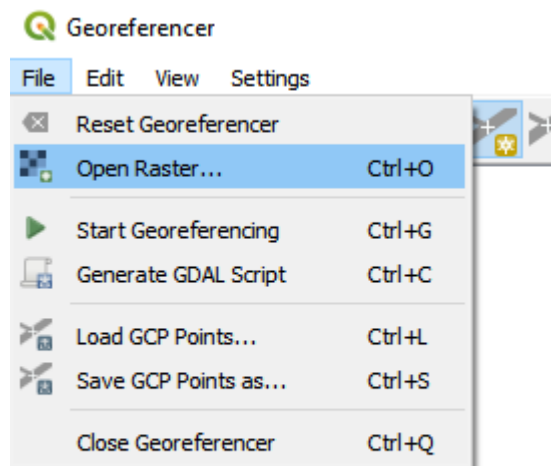
In this part we will first georeference a map of Benin and use this in order to finish the missing transmission lines. In many cases you will come across outdated or incomplete GIS data and this is a useful way of generating correct data when these cases occur.

How to Georeferencing

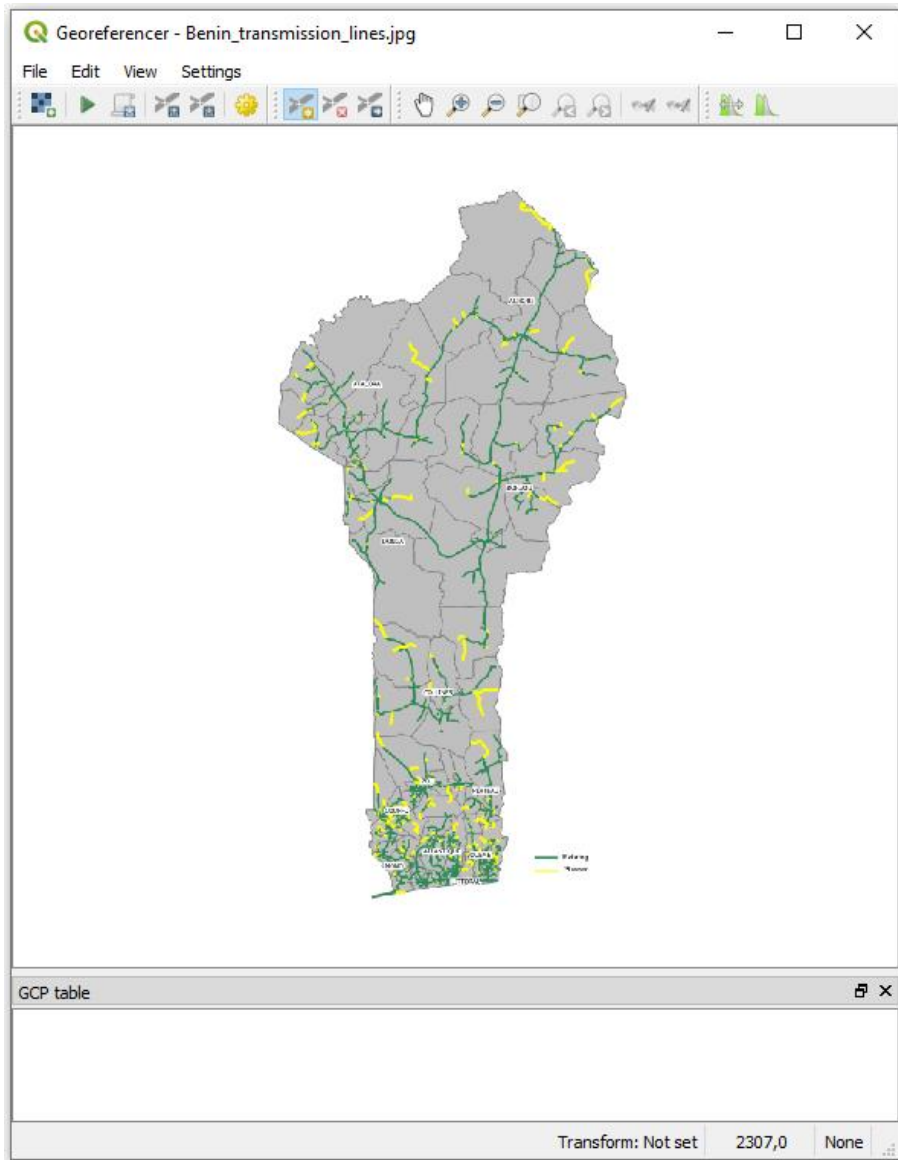
1. First open the **Georeferencer** by going to the menu called “Layer”



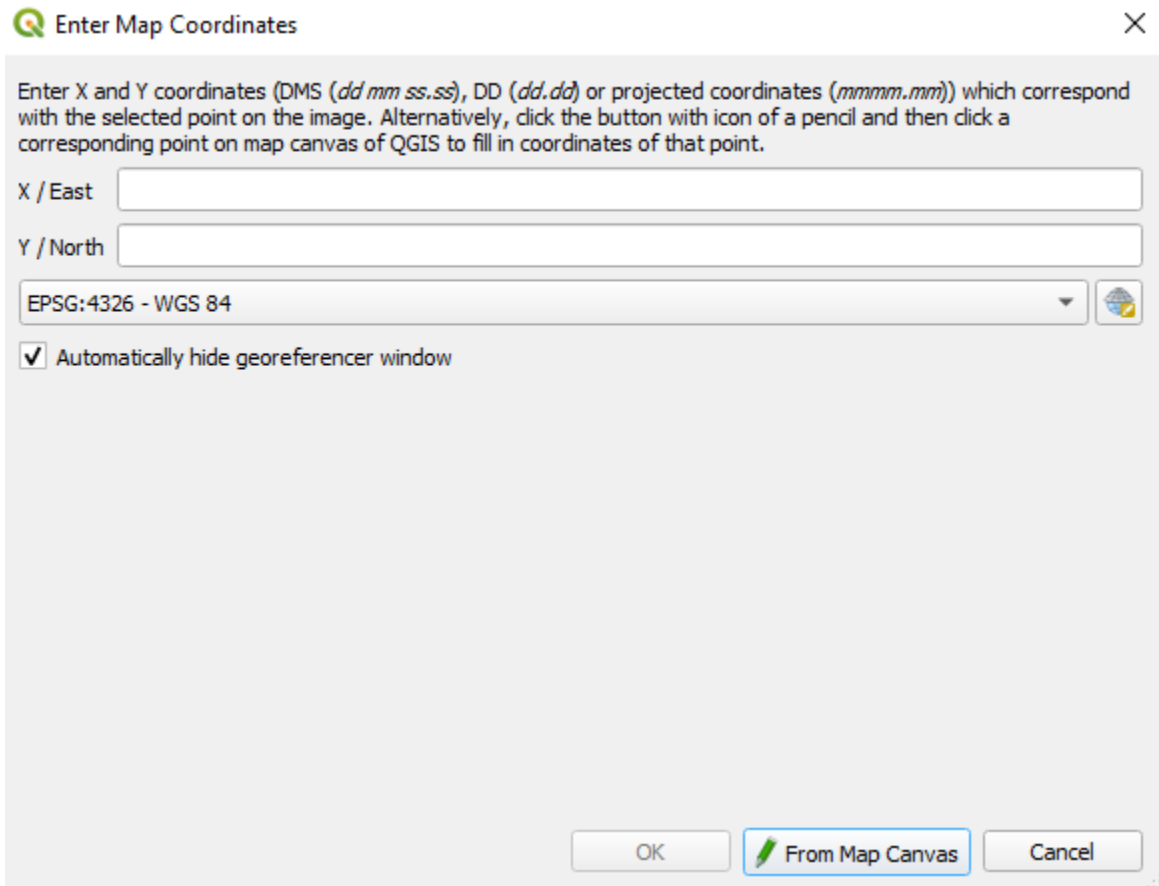
2. On the top of the screen that opens click on **File → Open Raster**.



3. Next, navigate to the image named “Benin_transmissionlines.jpg” in the Benin folder you have downloaded. If you are prompted to choose a coordinate system choose **WGS 84 (EPSG:4326)**.



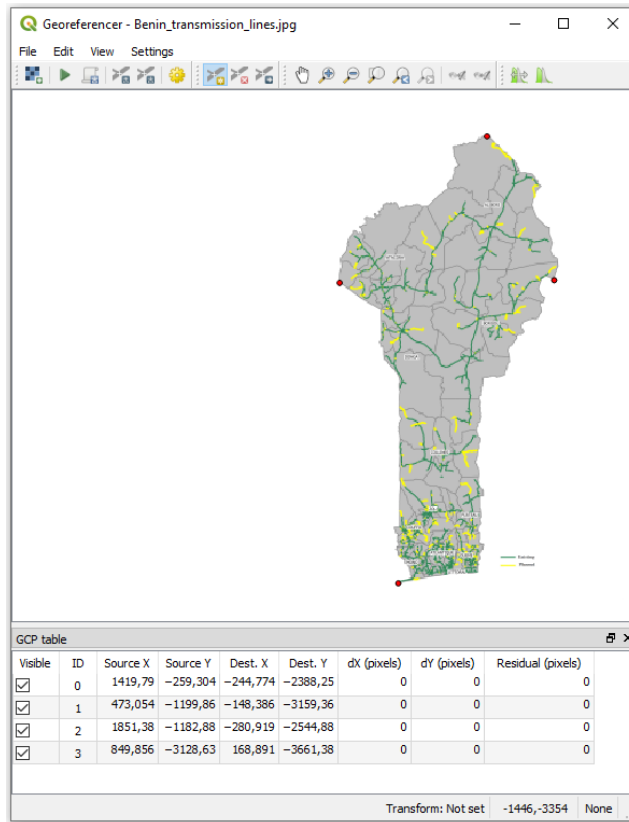
4. Now you will be able to add some control points to your map. These control points will be used in order to line your image up with the rest of your datasets. Use your mouse wheel or the icons at the top to zoom in and out of the picture. When you have zoomed in to your liking you can click on the map to add a control point. This will open the window below.



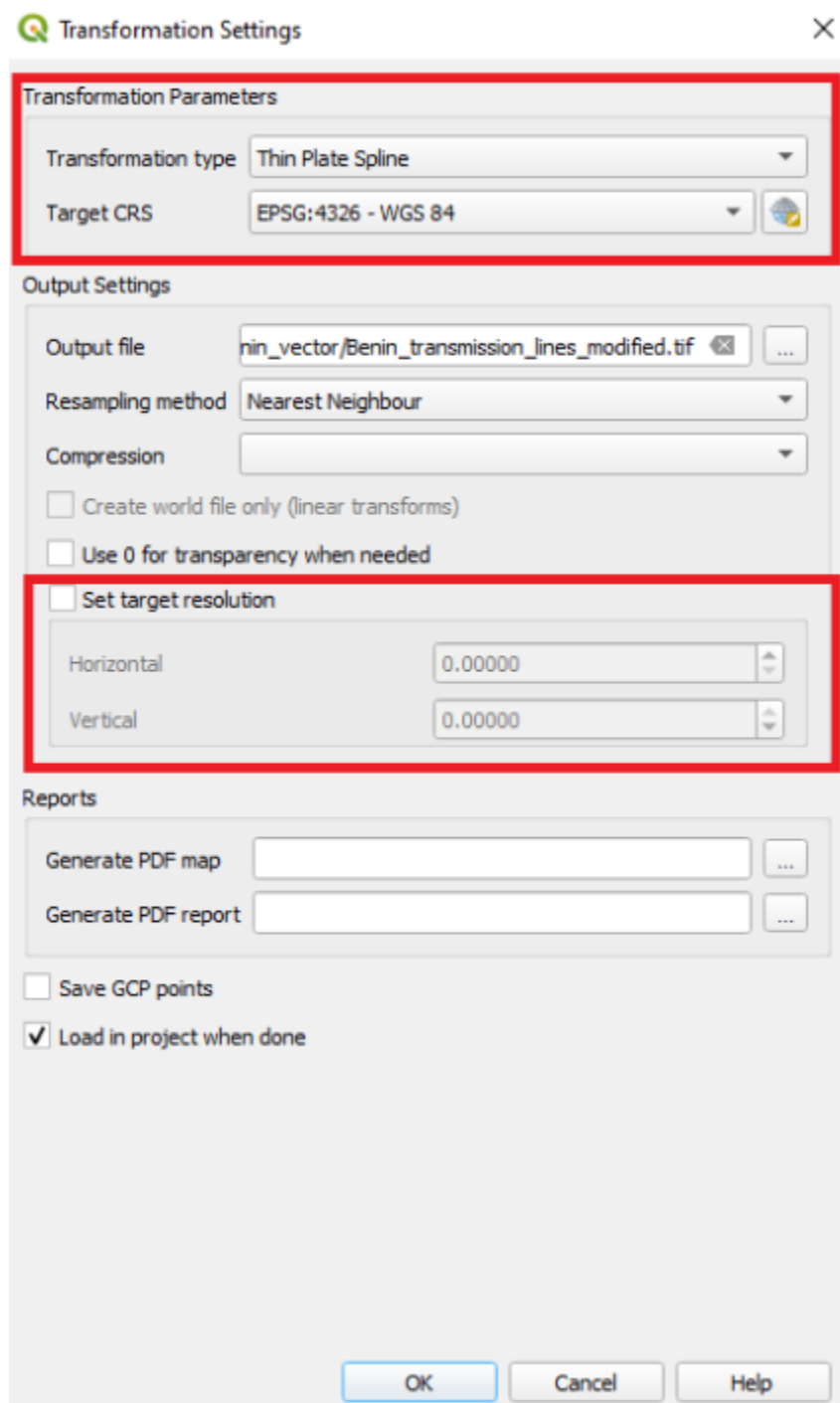
Here you can choose to enter the control points using the map canvas directly using the “From map canvas” by just clicking on the corresponding point in your canvas. The more points the better. The idea is to fit known areas of your image to known areas of the administrative boundaries that you have imported

NOTE: Instead of what is described above you can add the coordinates of the point that you clicked on directly in the X and Y fields. These coordinates should be entered in the coordinate system chosen.

5. As you add points you will see that there are rows being added to the window named “GCP table”. Each row represents a control point that you have added. The more points the better and you should make sure that your points are covering the entire study area. For this exercise please add between 6 and 8 points (in general the number of points should increase as the size of your study area increases).



6. After entering all of the control points click on **Settings** → **Transformation settings...**



Set Transformation type to Thin Plate Spline.

Select the right coordinate system in **Target CRS** (WGS 84)

In the field for **Output raster** find the folder that you want to use for saving your raster (choose the “Benin_vector” folder provided to you).

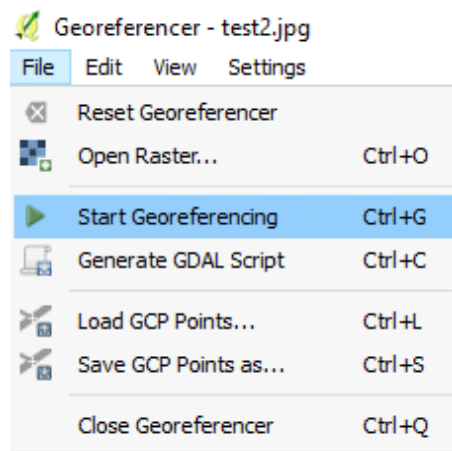


In **set target resolution** set the size of each cell. The smaller the cell size the better (set 0.0083 with minus sign as in the figure above). This is in degrees and corresponds to approximately 1 km). **NOTE: in order to change the resolution from the default you have to check the box named “Set target resolution” if you have to change the coordinate system manually make sure to uncheck the box before the next step. Having the box checked can cause errors.**

Check the box “Load in project when done”

When this is done click on “OK” to close the window.

7. Finally go to **File** and click on **Start Georeferencing**.



This might take some time. When it is done, the map should be in the same place as the administrative boundaries.



(The map above has been created by putting the administrative boundaries on top of the georeferenced image and turning its transparency to 50%. You can turn the transparency to 50% on the first window of the symbology tab in properties. This is a good practice if you want to make sure that the dataset falls in the right spot and for the following steps)

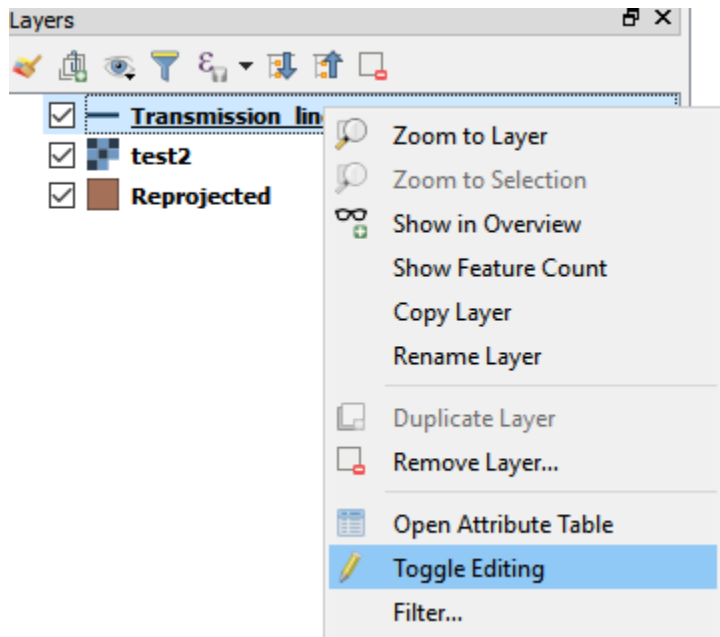
8. Close the georeferencing window.

NOTE: If your map ends up completely wrong this might be due to discrepancies in the coordinate systems.

Edit vector files

Sometimes it is of interest to either add points/lines/polygons to an existing dataset or create a new vector dataset from scratch. Here we will go through the first option.

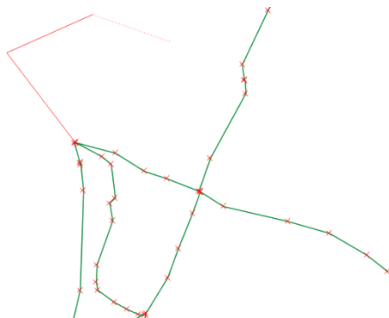
1. Move the *reprojected transmission lines* dataset to the top in the **Layers Panel**.
2. In the Symbology tab (in Properties) make the lines black and increase the **Width** to make the lines clearly visible.
3. Right-click on the dataset and click on "Toggle Editing"



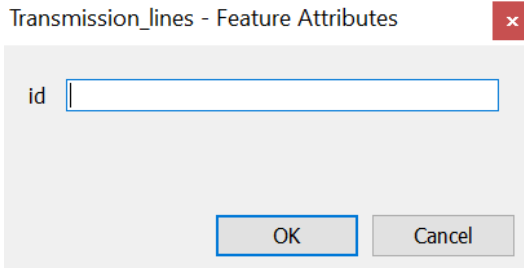
4. This will enable some different options depending on what type of vector file you are working with (if you are working with points, you will be able to add points, if you are working with lines you will be able to draw lines, if you are working with polygons you will get the chance to draw polygons)



5. Now you can simply click/draw your cursor wherever you want to add data by clicking on the V-shaped line in the red box above (marked in the image above). After clicking on this you will be able to draw your lines by clicking on the map. The first click will define your starting point, and thereafter you can add as many point as you like.



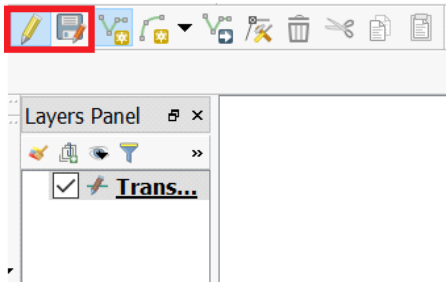
When you are finished with a line, right click on the last spot. This will open the following screen:



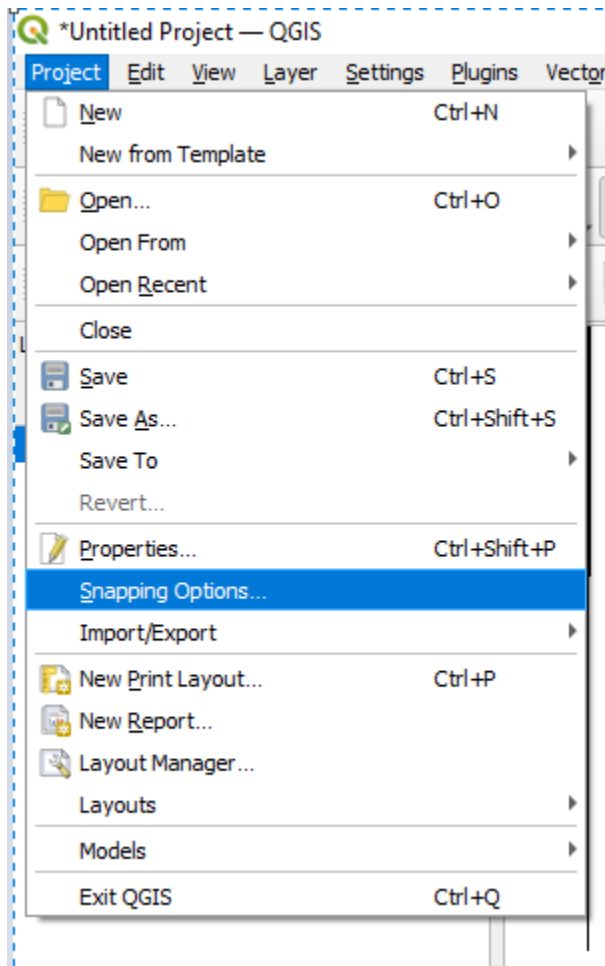
Here you attribute data. In this exercise we will just enter a number and for now it does not matter which number you write, this is just a way to distinguish between different line-segments.

Use the editor and the georeferenced map to fill in the missing transmission lines (only existing lines, according to the legend at the bottom (green lines) of the georeferenced map) in the reprojected transmission line layer that you have created

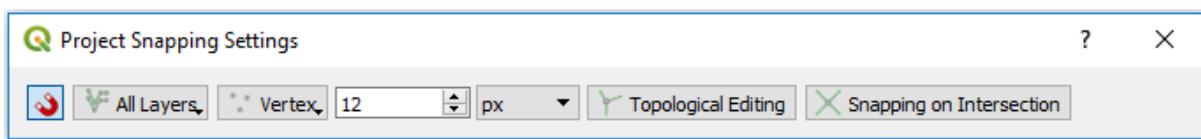
6. Click on Save Layer Edits and then disable Toggle Editing.



NOTE: The accuracy of your lines and points depends on the scale in which they were created if you zoom in further after drawing your lines you will see discrepancies. One of these might be that the lines do not connect to one another. To fix this go to Project → snapping options



Here you set the variables as shown below.



Now when you are close enough to a line QGIS will make sure that the new line is connected to the old one.

7. Save the edits.

This marks the end of this exercise. Here we have learned how to clip, reproject and save vector layers in QGIS. We have also learned how to georeferenced and edit existing datasets to mitigate missing data.



This document was updated on 01.11.2024