



Getting Ready: Download GAMS and the UNI-CGE Model

Learn how to download the GAMS modeling software, place all necessary files into your directory and run the model. After completing this “Getting Started” exercise, your model will be ready to use for model exercises.

CONTENTS

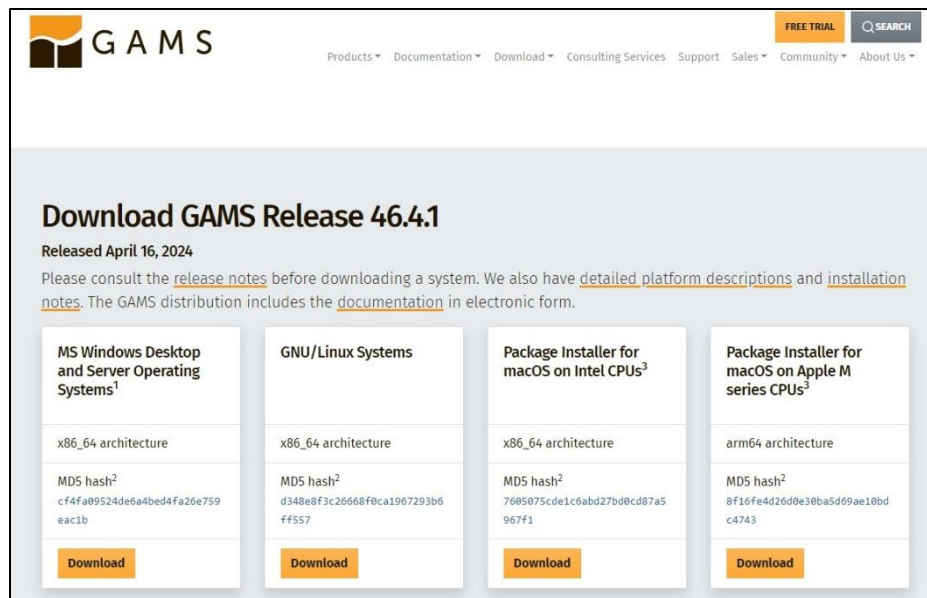
1. DOWNLOAD GAMS MODELING SOFTWARE.....	2
2. CREATE A DIRECTORY AND DOWNLOAD THE UNI-CGE MODEL	4
3. OPEN THE UNI-CGE MODEL IN GAMS – METHOD 1	6
4. OPEN THE UNI-CGE MODEL IN GAMS – METHOD 2	7

1. DOWNLOAD GAMS MODELING SOFTWARE

To access, download and install the demo version of GAMS, follow these steps:

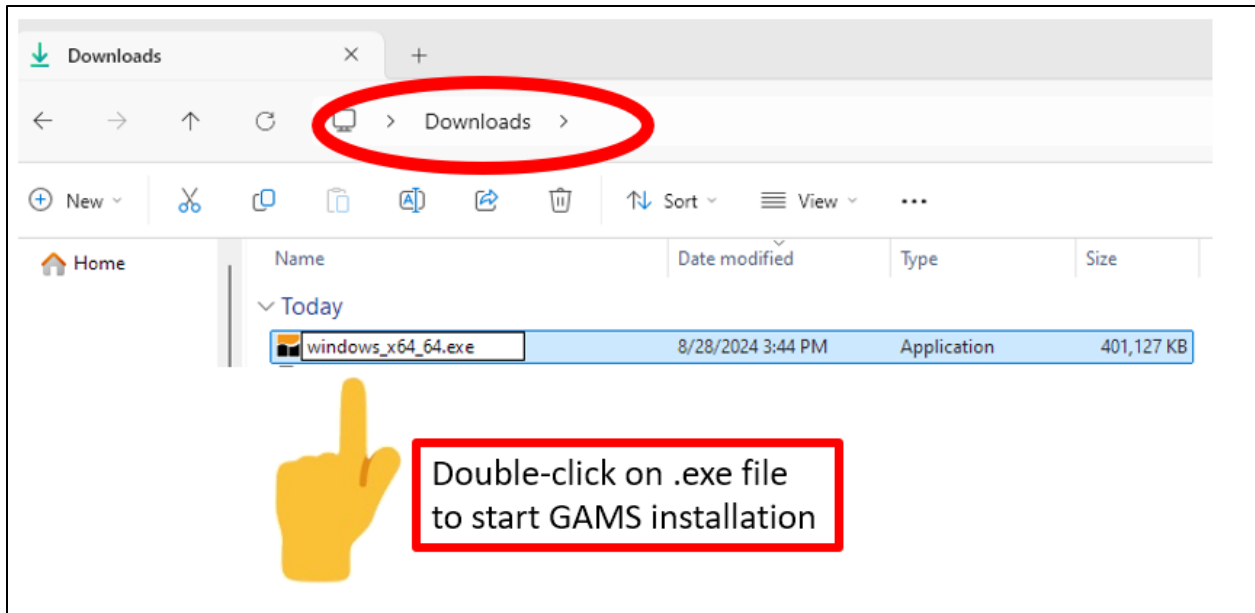
- A. Go to the download page on the GAMS website at www.gams.com/download
- B. Select the Download that matches the operating system on your computer (Figure 1). Then click on the “Download” button. This will download the Installation Wizard onto your computer. The installer program will have an .exe suffix. You can install it into your Download folder, or choose another folder.

Figure 1. Download Page on GAMS (29 April 2024)



- C. Locate and double-click on the installer program, and the installation will begin (Figure 2).
- D. A series of screens will appear. Make these selections:
 - i. Accept the GAMS Set-up Wizard
 - ii. Accept the default destination file for GAMS (unless you want to locate it someplace else on your computer)

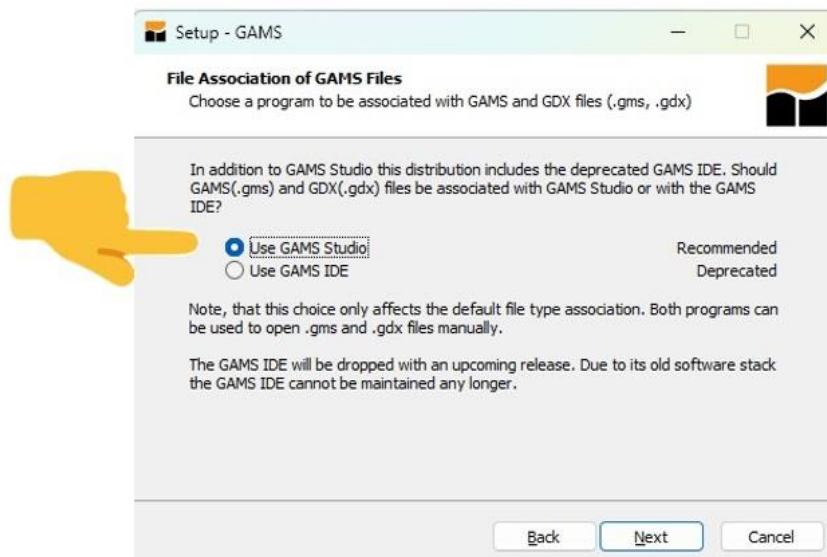
Figure 2. Double-click on the installer program



E.

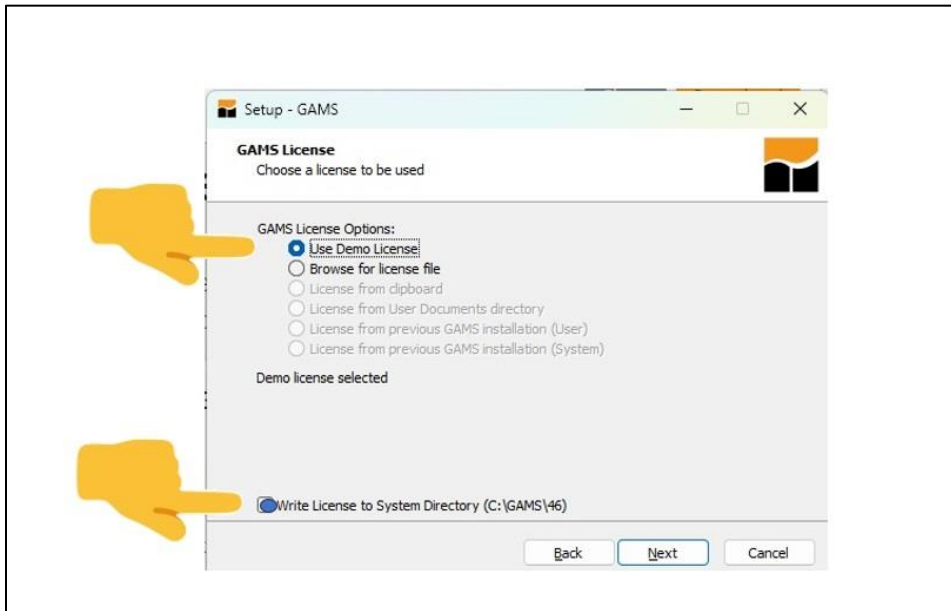
iii. Choose GAMS Studio version (Figure 3).

Figure 3. Choose the GAMS Studio version of GAMS



iv. Choose Demo license option (Figure 4). And, agree to write the license to the system directory, which is the default directory in which the GAMS software is being placed.

Figure 4. Choose the Demo license



About the GAMS demo license: A free demo license time-limited for 5 months is included with the GAMS distribution. The demo license lets you generate and solve small models. On expiration you need to update your GAMS system (that comes with a new demo license) or request a demo license time-limited for 12 months. Please note, a valid free demo license requires a recent GAMS version (not older than 18 months). When the time-limited demo license expires you need to update your GAMS system or request a new demo license at <https://www.gams.com/download>.

2. CREATE A DIRECTORY AND DOWNLOAD THE UNI-CGE MODEL

Follow these steps to download the UNI-CGE model:

- A. Create a directory for your work in this course with a name like "Yourname_UNI." You may want to create a sub-directory with a name like "UNIModel" that will hold only the model and its associated files.

- B. Download the UNI-CGE^{XX}.zip from the course website, and save it in the directory (or subdirectory) you have just created. “XX” is the model version number. We occasionally update or improve the model.
- C. Unzip the file. The UNI-CGE model is comprised of a suite of files. They are all contained in the .zip file All files in the .zip package must be placed in the same directory so that the GAMS program can locate them when you run the model.

D. Types of files -

The main model is named UNI-CGEXX.gms. The gms suffix denotes that it is a GAMS program file that can be run and solved. Some files in the .zip file have an .inc suffix, which stands for “include.” Inc.files are auxiliary files that are called into the main model program to serve some function, such as report writing or checking for errors. The .inc files are separated from the main program to reduce clutter.

The files of greatest interest to you are listed and described in Table 1. The other files in the .zip file are necessary but have technical roles that we do not need to focus on.

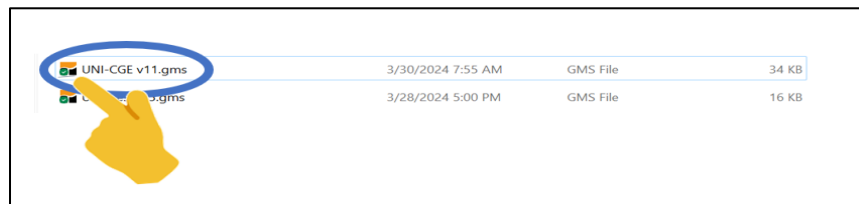
Table 1. Files contained in the UNI-CGE.ZIP package

UNI-CGE FILES	
File Name	What It Does
UNI-CGE vXX.gms	The most recent version of the CGE model
1Calibration-UNI.inc	Uses data in the SAM to calibrate parameters and coefficients used in model equations
1Rebase-UNI.inc	Uses data in the SAM to prepare a report on the base data, including the macro SAM and tax rates
1LES.inc	Calculates the beta and gamma parameters in the LES function
SAM-USA333.xlsx	SAM for United States

3. OPEN THE UNI-CGE MODEL IN GAMS – METHOD 1

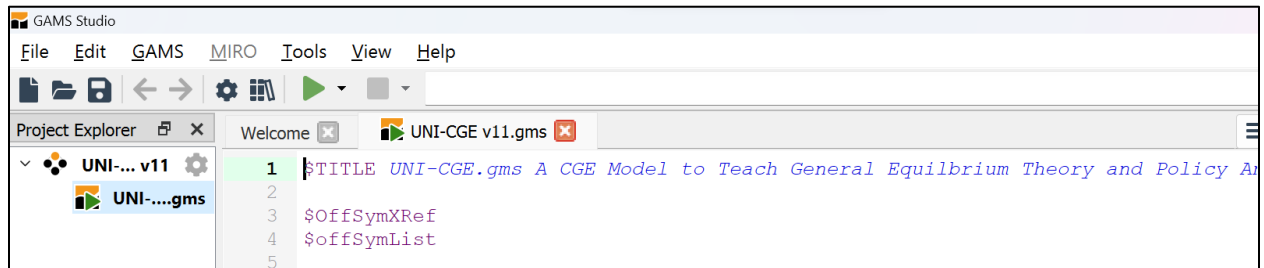
Open your file directory app (in Windows, it is the File Explorer app). Find the name of the model, UNI-CGEXX.gms in the list of files (Figure 5). Double-click on the green arrow on the left side of the model name. This will open the model inside of the GAMS Studio app. The GAMS software should open automatically.

Figure 5. Finding the .GMS model file in the list of files



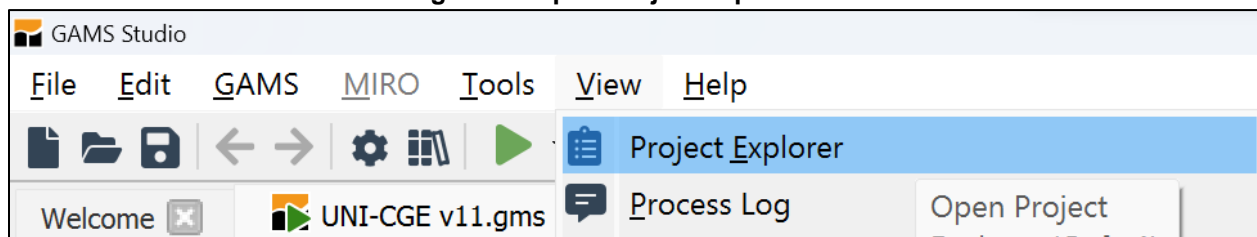
The name of your model will be on the left side of the GAMS screen (Figure 6). This is GAMS' Project Explorer window. It lists all open files and projects.

Figure 6. File Explorer lists all open files and projects



If your model name is not shown, click on View>Project Explorer on the upper menu. Select Project Explorer (Figure 7). This will open a view with the list of all open files and projects.

Figure 7. Open Project Explorer window.

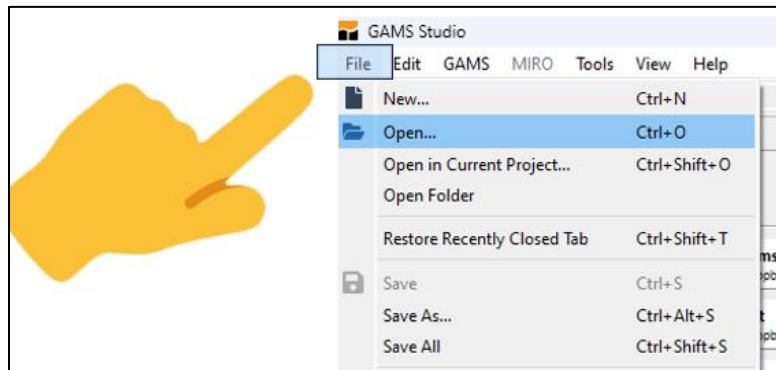


The model is ready to run!

4. OPEN THE UNI-CGE MODEL IN GAMS – METHOD 2

Open the GAMS Studio app. Click on “File” in the upper left corner (Figure 9) then select “Open” from the drop-down menu.

Figure 9. Open a File in GAMS



Select UNI-CGEvXX.gms from the directory that you created for this course. This will open the UNI-CGE model. The model is ready to run!