



Model for Analysis of Energy Demand (MAED)

Hands-on 1: MAED Software Installation

Learning outcomes

This exercise will help you set up the MAED tool on your system. MAED is available for download locally and used offline on Windows operating systems.

By the end of this exercise, you will be able to:

- 1) Install and access MAED-D and MAED-EL tools offline on Windows systems.

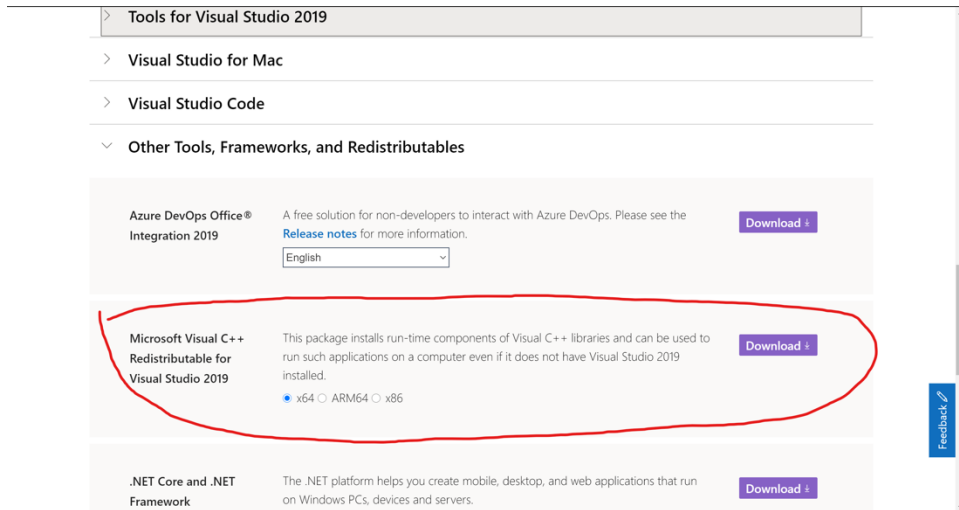
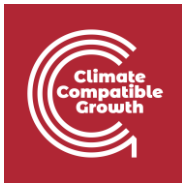
Installing MAED for Offline Use

The MAED tools may be installed locally for offline use. This could be useful when internet access is limited or even restricted due to sensitive data. The offline version of MAED tools is currently only available for Windows operating systems.

To install MAED on Windows, you need to ensure that Microsoft Visual C++ Redistributable for Visual Studio 2019 is installed on your computer. If it is not installed on your computer, please use this link to install the x64 (for 64 bit OS) or x86 (for 32 bit OS) version, depending on the version of windows installed on your computer.

<https://visualstudio.microsoft.com/downloads/>

Microsoft Visual C++ Redistributable for Visual Studio 2019 should be under the "Other Tools, Frameworks, and Redistributables" tab on the website.



Once you have ensured that Microsoft Visual C++ Redistributable for Visual Studio 2019 is installed on your computer, fill this anonymous Google Form to get access to the MAED installation file.

Google Form: <https://forms.gle/FpUufrjVXFxY86xi7>

Once you click on that link, you will land on the Google Form page shown in the picture below. As stated in the consent form, anonymous data on your country and affiliation are collected for statistical purposes. If you agree to these terms, complete the survey, and click the button **"Submit"**.



Model for Analysis of Energy Demand (MAED)

The MAED (Model for Analysis of the Energy Demand) is a simulation model designed to evaluate medium and long-term demand for energy in a country or a region. It was adapted by the IAEA from the MEDEE-2 model developed for the International Institute for Applied Systems Analysis (IIASA) to analyse the evolution of overall energy, including electricity, demand in a region or country. The MAED model is made available under the following terms and conditions:

1. The MAED computer package is not to be sold in any form;
2. IAEA makes no claims regarding the usefulness of the MAED computer package and assumes no liability arising from its use for any purposes;
3. Any innovations or improvements made to the original MAED package should be communicated to IAEA and made available to IAEA upon request;
4. Transfer of the MAED computer package to a third party should be only done under the same condition as for the original recipient.

The information entered in this form is used purely for statistical purposes. No personal information is collected or preserved.

By continuing, you agree to the above conditions. If you do not agree to the terms, in whole or in part, please do not continue.

Country *

Choose

Affiliation *

- University
- Ministry/Government Organization/Institution
- International/Regional Organization/Institution
- NGO
- Freelancer
- Individual Researcher
- Other: _____

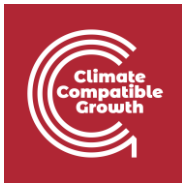
Submit

Clear form

Never submit passwords through Google Forms.

This content is neither created nor endorsed by Google. [Report Abuse](#) - [Terms of Service](#) - [Privacy Policy](#)

Google Forms



Once you Submit the Google Form, you will be redirected to this confirmation message which include the full link to the Drive folder where you can find the MAED executable:

Model for Analysis of Energy Demand (MAED)

Your response has been recorded. Please proceed to the link below to download the executable file for MAED.

Then, follow the instructions provided on the Hands-on 1 of the Open Learn Create online free course on "Energy Demands Projections with MAED (Model for Analysis of Energy Demand)" part of the "Climate Compatible Growth June 2022 Collection" to install the software correctly.

If technical assistance is needed, the users should contact PSS.Contact-Point@iaea.org.

Executable: <https://drive.google.com/drive/folders>

Online free course: <https://www.open.edu/openlearncreate/course/view.php?id=8396>

[Submit another response](#)

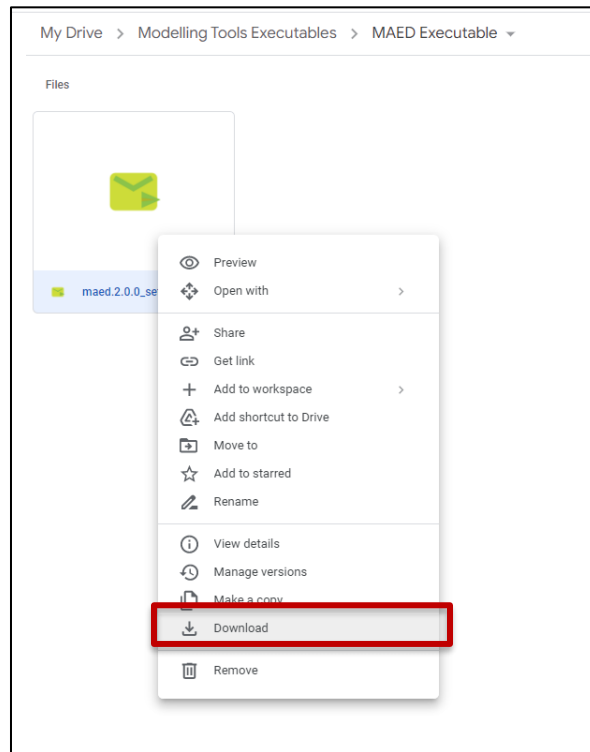
This content is neither created nor endorsed by Google. [Report Abuse](#) - [Terms of Service](#) - [Privacy Policy](#)

Google Forms

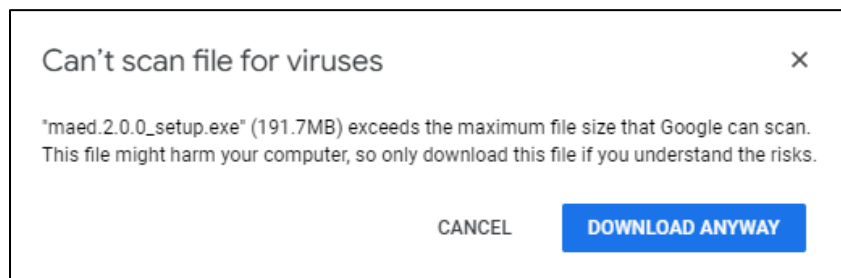
Then, click on the link highlighted in the **Red Box** and you will be redirected to a Drive Folder (as shown below).

A screenshot of the Google Drive interface. At the top, there is a search bar with the text "Search in Drive". Below it, the breadcrumb navigation shows "My Drive > Modelling Tools Executables > MAED Executable". The "MAED Executable" folder is highlighted in yellow. Underneath, the "Files" section shows a single file named "maed.2.0.0_setup.exe" with a green folder icon.

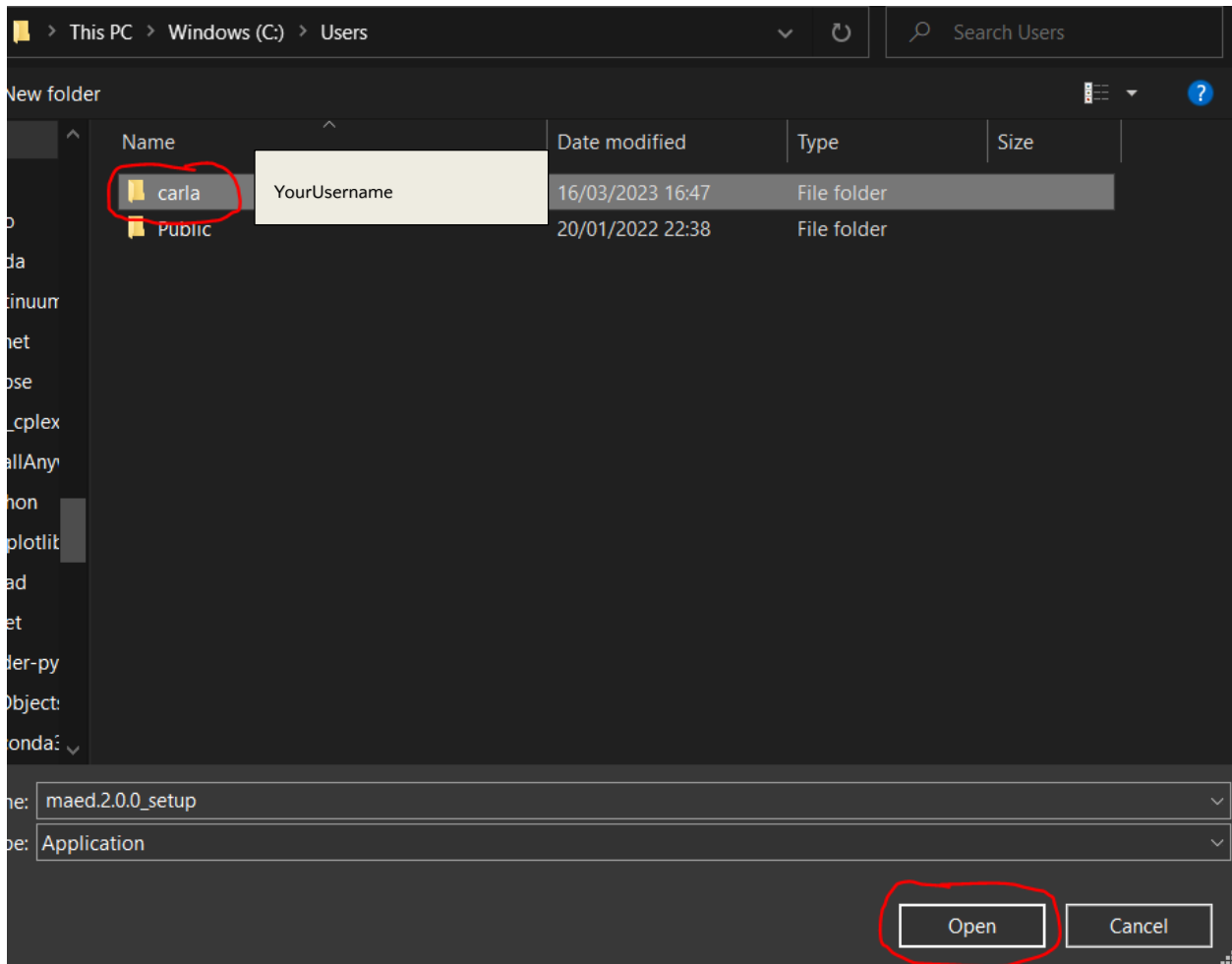
Then move your mouse to the **maed.2.0.0_setup.exe** and right click, then click Download.



If you receive this warning message, click **Download Anyway**.



Save this file to the following path: **C:\Users\your_username**.



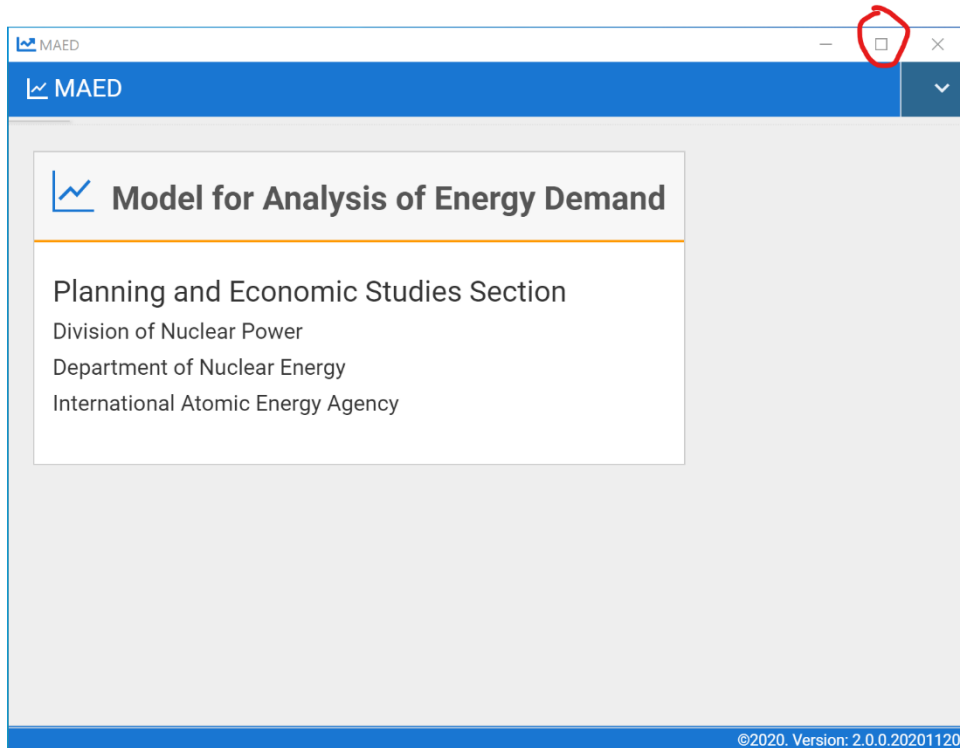
Go in that folder and double click on the executable with this icon to access MAED offline.



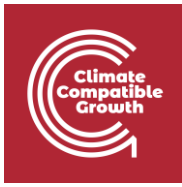
A shortcut to the maed.exe file should also be created on your desktop by default.



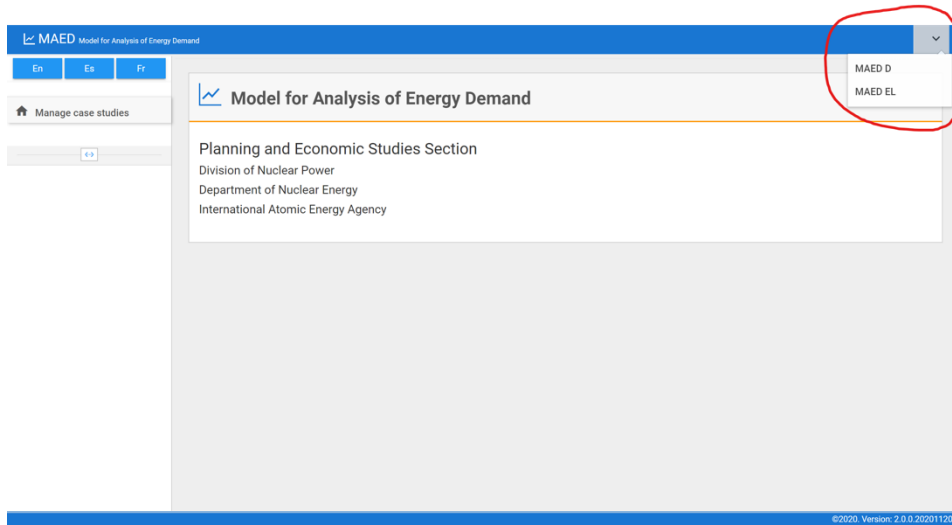
Please note that if MAED is not maximized, you may not be able to view all tabs, as shown below:



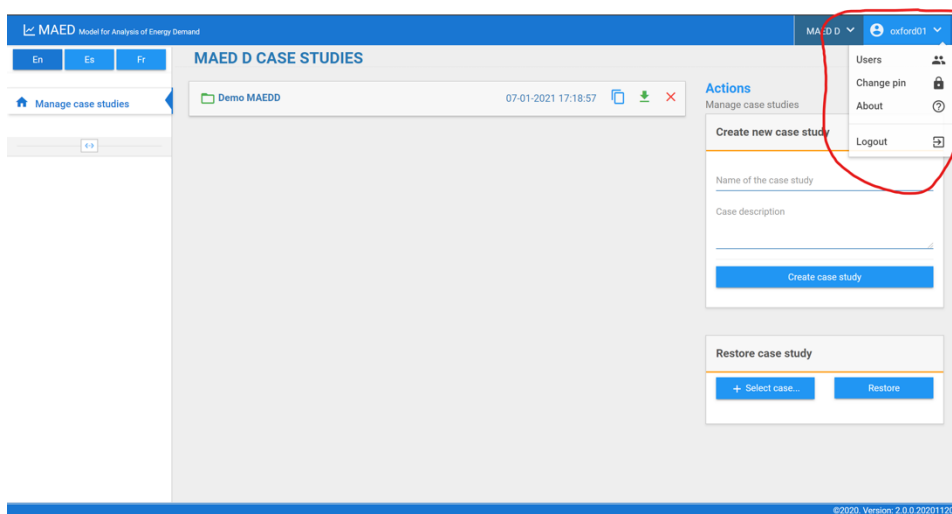
Clicking the "square" maximize window button should show the remaining menus as shown below:



This will bring you to the main menu of MAED:



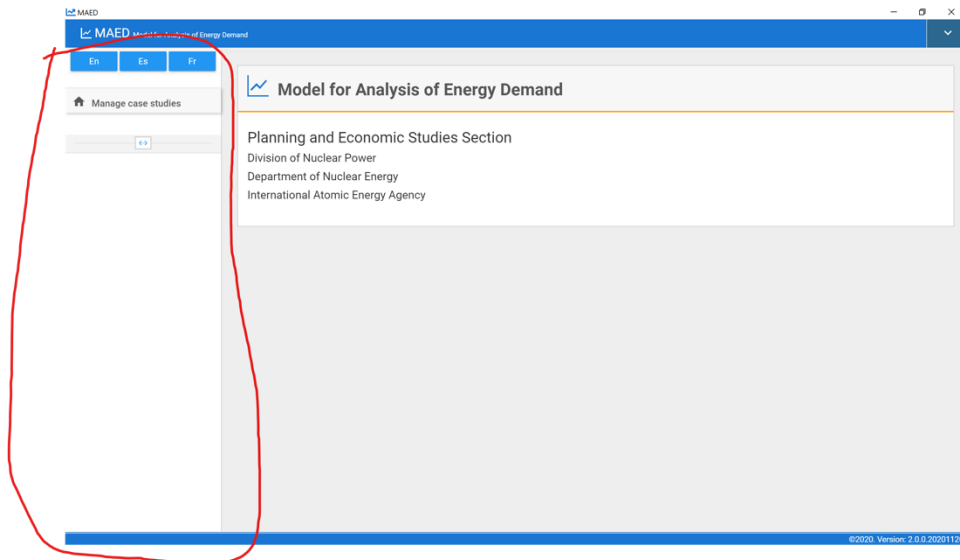
The MAED-D or MAED-EL tools can be selected using the dropdown menu on the top right. Clicking the MAED-D tools should bring you to the main menu for the MAED-D tool as follows:



You may also access account settings and change to the MAED-EL tool. The main menu for the MAED-EL tool looks as follows:



And on the left you can access the main menu for your MAED case studies.



Congratulations, you can now access the MAED tool offline and can move on to the remaining hands-on exercises on MAED.