

## **Activity**

### **Question 1**

Look at the map entitled 'Protected areas – Myanmar'. Do you think the protected areas are well designed? Why or why not?

### **Question 2**

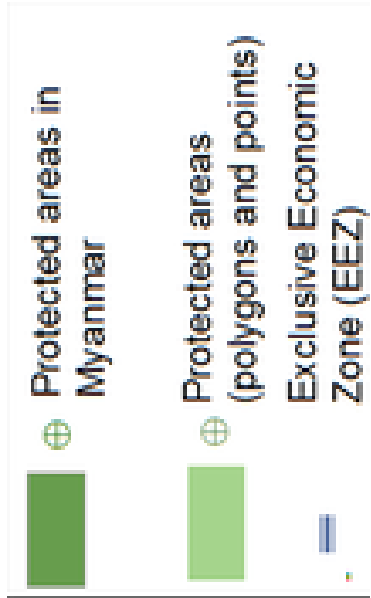
Now compare it to the map entitled 'Key biodiversity areas – Myanmar' and 'Vegetation types – Myanmar'. Key biodiversity areas are places that contain high amounts of biodiversity or are particularly important for important species or ecosystem services. Do you think any important biodiversity areas are not being well protected? What habitat/vegetations types are missing from the protected areas? Which ones and why?

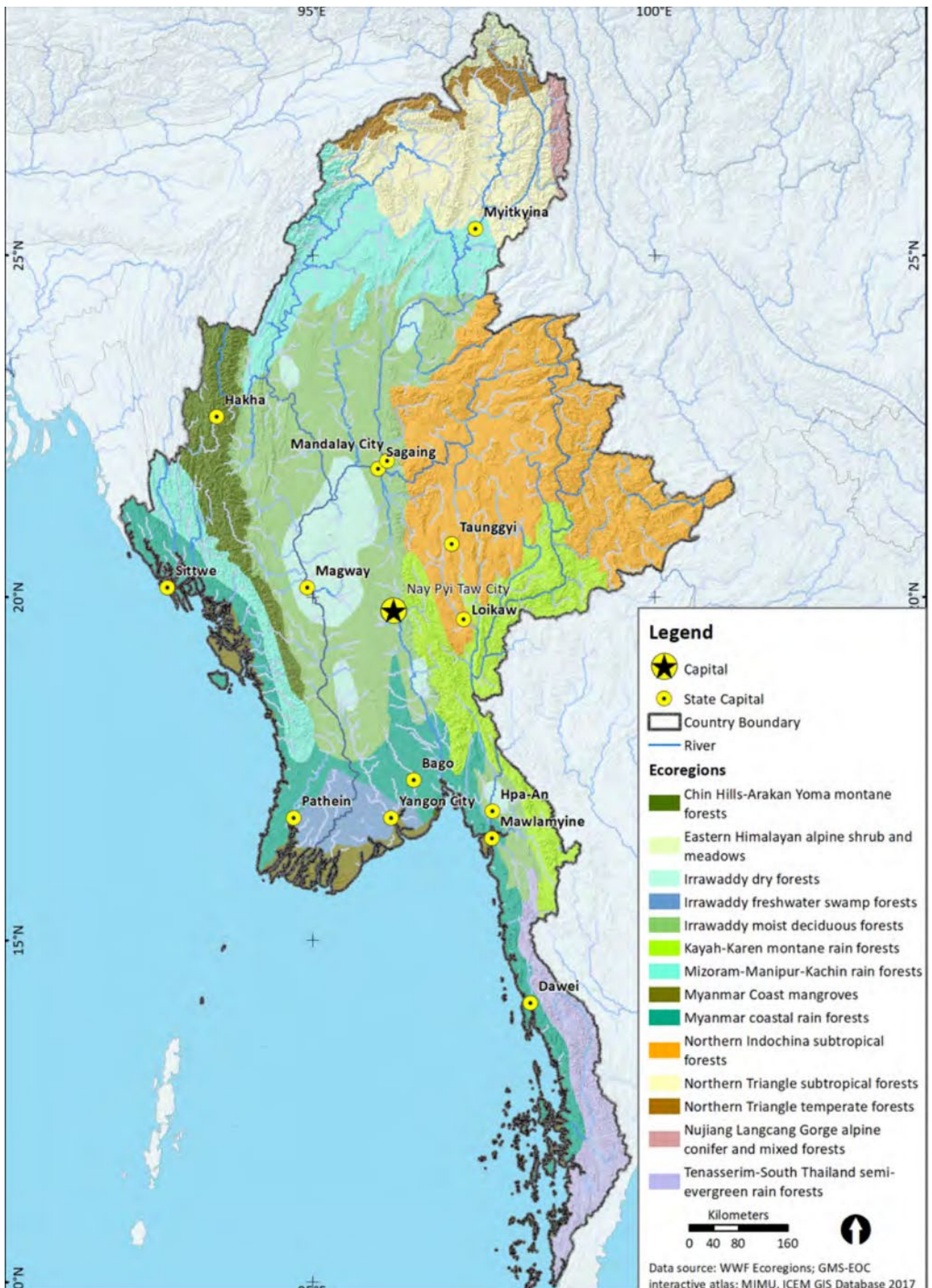
### **Question 3**

If you were going to create a new protected area in Myanmar where would you put it? Why? Look at the map called 'Economic activity and land use – Myanmar'. Will it interfere with economic activity?

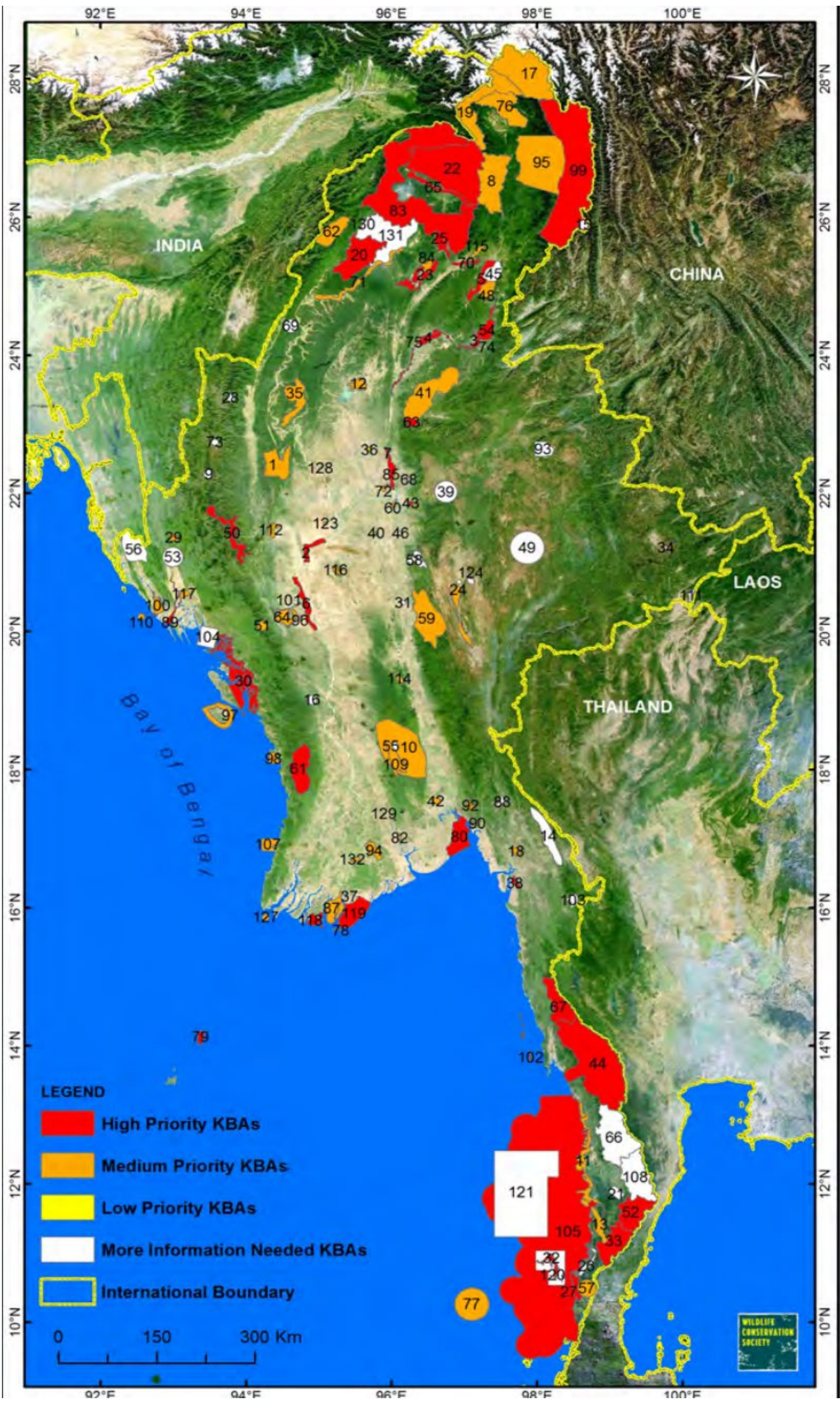
## **Activity**

Imagine you have been tasked with creating 3 new protected areas in Myanmar. Decide where you would place them and justify this based on the habitats/species they will protect and the potential conflict with economic activities.









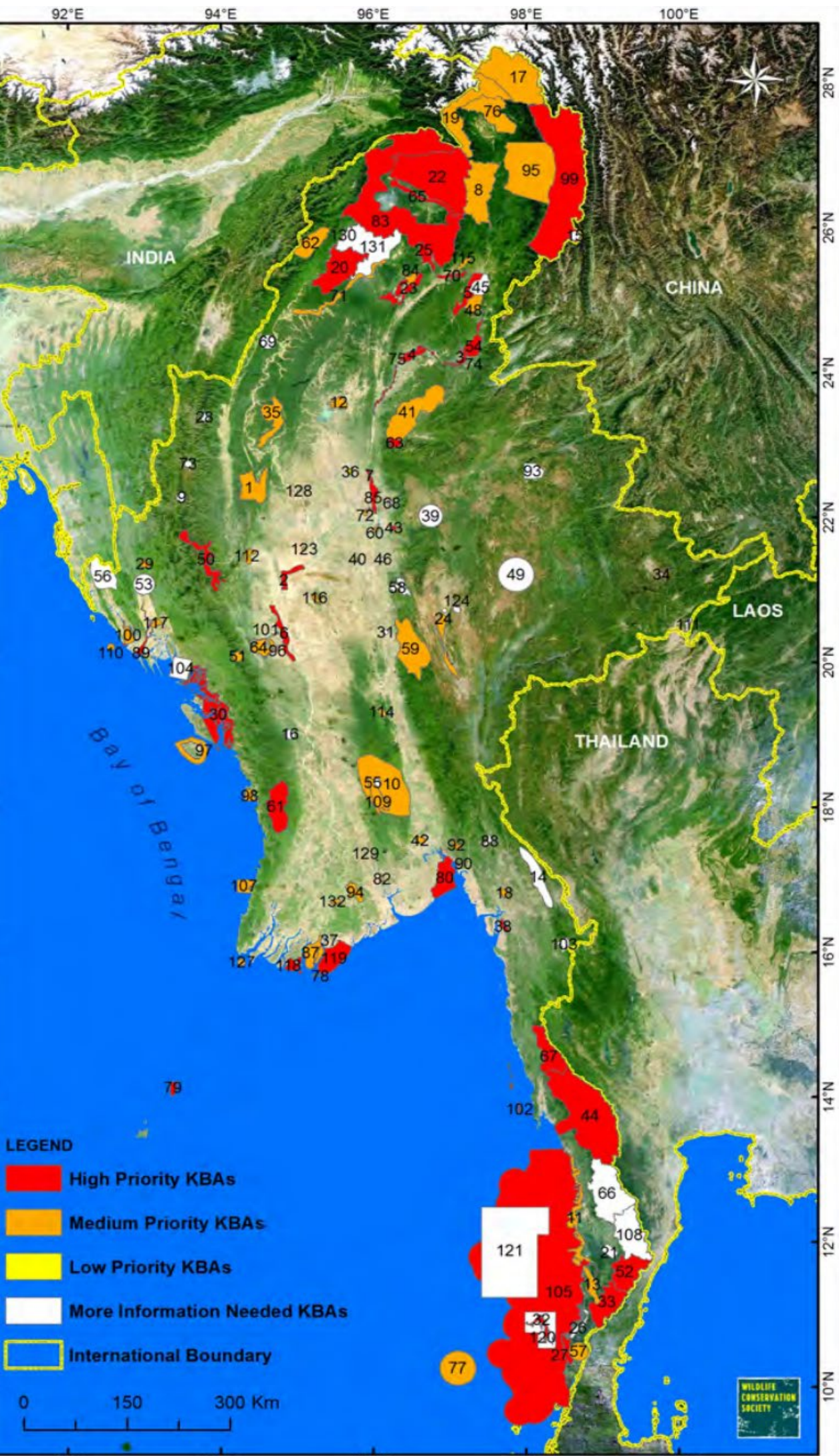
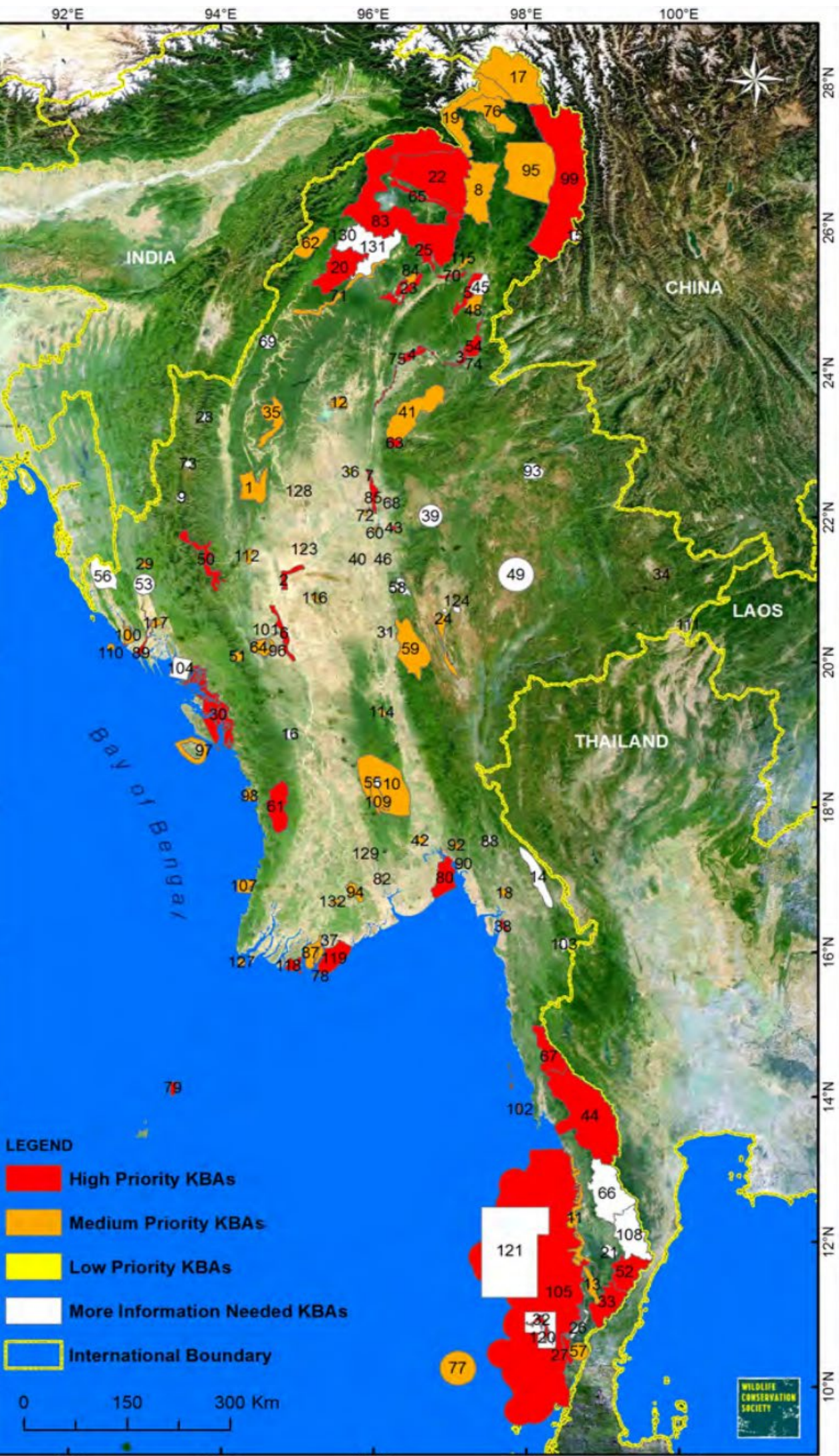
INDIA

CHINA

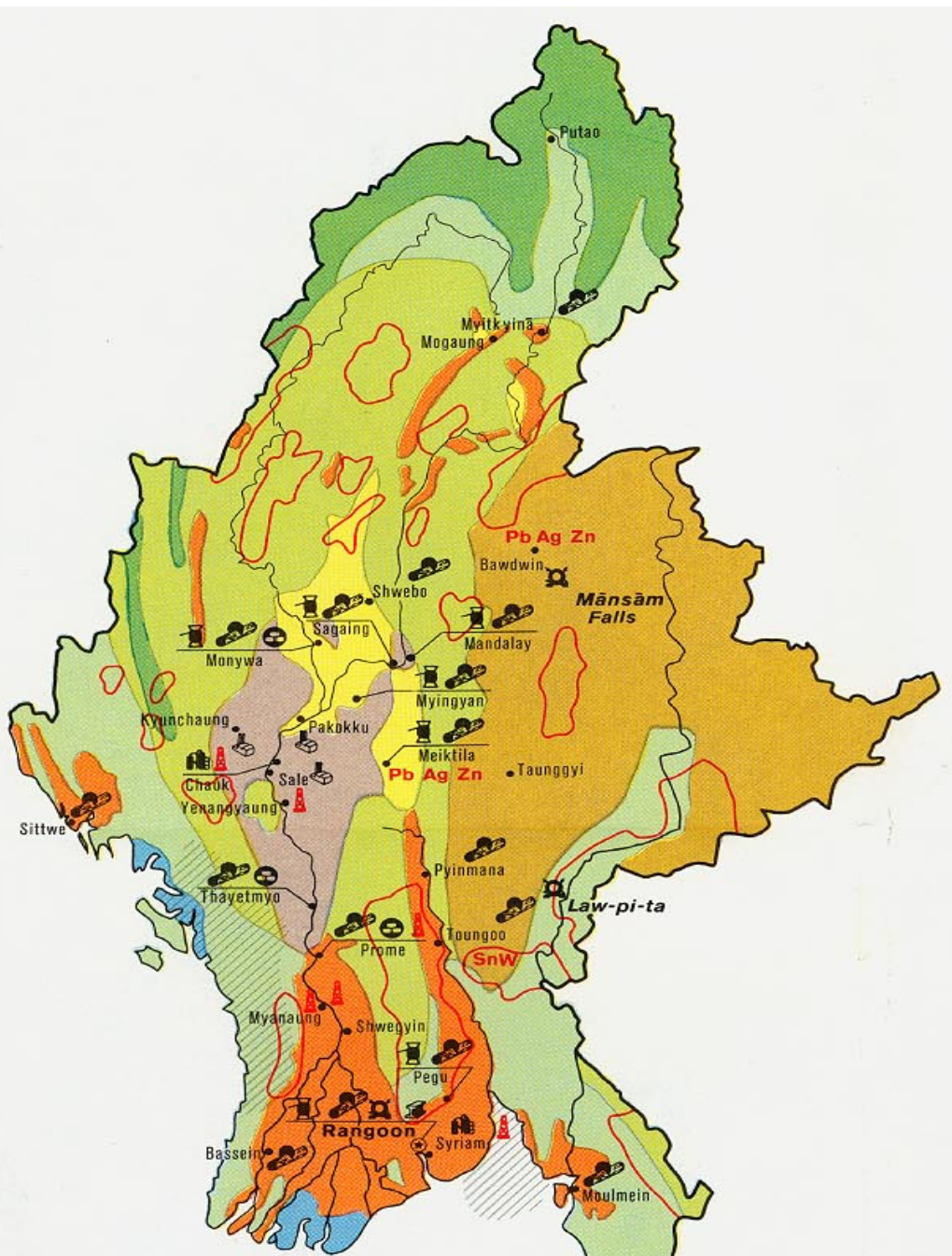
LAOS

THAILAND

Bay of Bengal







## Economic Activity and Land Use

### INDUSTRY

- |                          |                    |
|--------------------------|--------------------|
| Textiles                 | Powerplant         |
| Wood and bamboo products | Building materials |
| Petroleum refining       | Steel mill         |
|                          | Fertilizer         |

### MINING

- |                                     |                 |
|-------------------------------------|-----------------|
| <b>PbAgZn</b> Lead, silver and zinc | Oilfield        |
| <b>SnW</b> Tin and tungsten         | Oil exploration |

### AGRICULTURE

- |              |                      |
|--------------|----------------------|
| Wetland rice | Dry cultivated crops |
|--------------|----------------------|

### NATURAL VEGETATION

- |                                     |   |
|-------------------------------------|---|
| Tropical evergreen forest           | Swamp forest  |
| Deciduous forest                    | Mountain evergreen forest                                 |
| Dry zone scrub and deciduous forest | Grassland, scrub, tropical and mountain evergreen forests |
| Teak                                |   |