

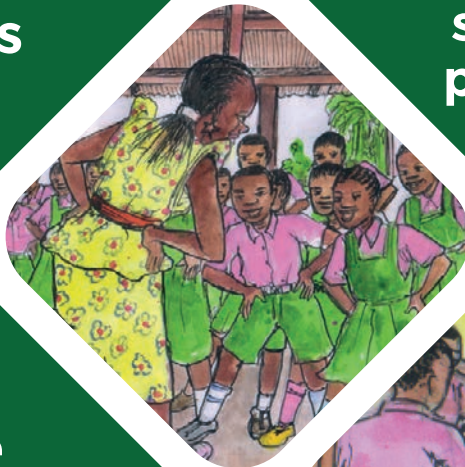
A Learning Assistant is in our school



She can give extra support to some pupils

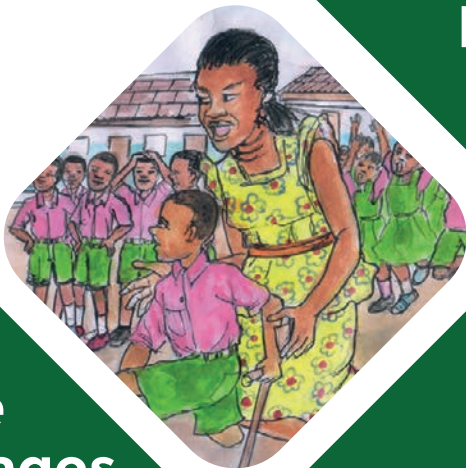
She is developing teaching skills

She helps girls and boys



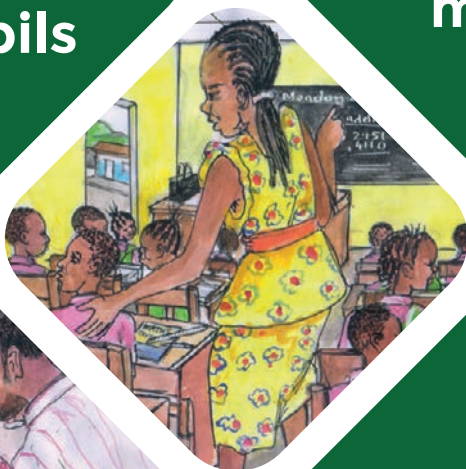
She is a role model

She encourages and motivates all pupils



She aspires to be a teacher in the future

She assists the teacher



She is contributing to the community

She is studying for the Teacher College entrance exam



Girls' Education Challenge



Funded with UK aid from the UK government, Artwork by Amadu Tarawally, PEN, Sierra Leone, Design by Steve Hasler, The Open University, UK. Licensed under a Creative Commons Attribution-Share Alike 4.0 License.